

P THE POCKET HOTEL

KYOTO-SHIJOKARASUMA



Good location with one minute's walk from Karasuma Station and Kyoto-Kawaramachi Station on Hankyu Railway Kyoto Line.

Located a one minute's walk from Nishiki Market, offering great access to Kyoto's top tourist attractions.

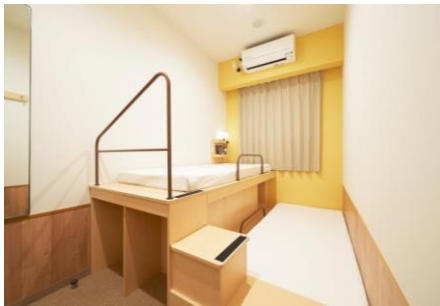
Locks on all rooms, for safe, secure, private spaces. Showers and restrooms are shared. Separate men's and women's shower rooms are available on the first floor.

We also have a Women-Only Floor so that female guests to safely enjoy time alone.

All rooms are NON-Smoking, and free Wi-Fi is available in all the rooms in the hotel.

We offer unprecedented services at an unprecedented size, and a heartfelt welcome to all of our guests.

GUEST ROOMS



Step twin room

Sotetsu and Nishikawa Co., Ltd. provide a comfortable sleep with the exclusive Cloudy Cube mattress.



Check

Scan the QR code in your guest room to check availability of shared shower rooms, the laundromat, and more from the comfort of your guest room.



Simplicity and Saffty

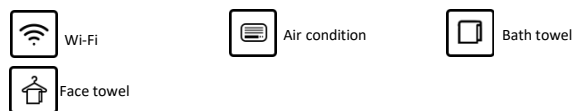
24-hour security system and private rooms with secure locks.

Room type & Number of guest rooms

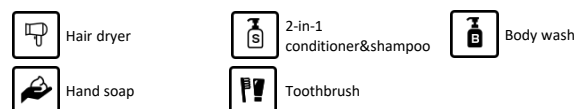
Room type	Room size (㎡)	Bed size (mm)	Maximum number of people	Number of rooms	Floor
Single	4.9~5.9	1100	1	72	2~6
Hollywood Twin	7.6~8.3	900 × 2	2	18	2~6
Step twin room	7.6~7.9	900 × 2	2	29	2~6
Bunk Bed	7.3~7.6	1000 × 2	2	27	2~6
Universal Twin	9.6	900 × 2	2	1	2

◆Number of guest rooms : 147 ◆All rooms are NON-Smoking ◆We also have a Women-Only Floor (and rooms), so that female guests to safely enjoy time alone
◆All rooms are private rooms with locks

Equipment in guest rooms



Restroom and Common Bathrooms



Hotel's original pajamas



Bunk Bed



Universal Twin

FACILITIES



Self-cloakroom

Before and after checking in, our hotel allows you to leave your baggage in our self-cloakroom.

*Available only on your check-in and check-out days.

*Only for guests who are staying at the hotel.



Self Check-in / Check-out Machines

This easy-to-use device allows you to perform the check-in & out procedure yourself.



Water By installing the Ryosui Kobo water purification system in the entire hotel, all the water in the hotel turns into gentle SOU-BI-SUI water, including water in the sink, shower and toilet.

Our one of a kind shower rooms are equipped with Grohe Rainshower heads.



Self-cloakroom



Coin-operated laundry



Contactless IC key card



Smoking space



Vending machines



Wi-Fi

*Hotel's original pajamas are available at the side of the reception area.

BREAKFAST

Breakfast can be enjoyed at the nearby 'DOUTOR Coffee Shop'.

※Please note that there is no breakfast venue within the hotel.

① DOUTOR Coffee Shop Kyoto Shijodori North

104 Tachiurinakanocho, Yanaginobanba-Nishiru, Shimogyo-ku, Kyoto-shi, Kyoto
(Approx. 1 min. from our hotel)

② DOUTOR Coffee Shop Kyoto Shijodori

1F Tokyo kaijo build., Fuyacho-Nishiru, Shijodori, Shimogyo-ku, Kyoto-shi, Kyoto
(Approx. 3 mins. from our hotel)

OPEN HOURS : Mon. - Fri./ 7:15~10:30AM (Last order)
Sat./ 7:30~10:30AM (Last order)
Sun. & Holidays / 8:00~10:30AM (Last order)

MENU : There are two breakfast choices available including.

PRICE : JPY 450 (tax included)



LOCATION

THE POCKET HOTEL KYOTO-SHIJOKARASUMA

474 Setoyacho, Nishikikoji-sagaru,
Yanaginobanba-dori, Nakagyo-ku, Kyoto-shi,
Kyoto, 604-8122

TEL (+81)75-283-1110
FAX (+81)75-283-1120

Roms 147
Checs IN/OUT
15:00 / 11:00

Credit Cards Accepted

VISA · MASTER · JCB · AMEX · DINERS · DISCOVER · UnionPay

QR Cord Payment Accepted

PayPay · Rakuten Pay · d barai · au PAY · LINE Pay · Alipay+ · WeChat Pay

E-mail

pocket_karasuma@сотetsu-group.jp

URL

<https://sotetsu-hotels.com/en/pocket-hotel/karasuma/>

Access

- One minute's walk from Exit 13 in Karasuma Station on Hankyu Railway Kyoto Line
- A 6 minute walk from Exit 1 in Shijo Station on Karasuma Subway Line
- One minute's walk from Exit 13 in Kawaramachi Station on Hankyu Railway Kyoto Line

*Karasuma Station Exit 13 can also be accessed from Shijo Station, via the Shijo St. Underpass.

Circumference Institution

* Estimated travel time is based on Google map.

◆Kyoto Station

Kyoto St.→ Shijo Sta.
(Subway Karasuma Line) Approx 3 minutes by train

◆Umeda Station

Umeda Sta.→ Karasuma Sta.
(Hankyu Kyoto Main Line) Approx 41 minutes by train

◆Nishiki Market Shopping District

Approx 1 minute on foot

◆Kamo River

Approx 10 minutes on foot

◆Kyoto Imperial Palace

Imadegawa Sta.→ Shijo Sta.
(Subway Karasuma Line) Approx 5 minutes by train

◆Nijo Castle

Nijo-mae Sta. → Karasuma Oike Sta. → Shijo Sta.
(Subway Tozai Line · Karasuma Line)

Approx 6 minutes by train

◆Fushimi Inari Taisha

Inari Sta. → Kyoto Sta. → Shijo Sta.
(JR Nara Line · Subway Karasuma Line)

Approx 16 minutes by train

◆Arashiyama

Arashiyama Sta.→ Katsura Sta. → Karasuma Sta.
(Hankyu Arashiyama Line · Hankyu Kyoto Line)

Approx 20 minutes by train

◆Kiyomizu-dera

Kiyomizumichi → Shijo Takakura
(Kyoto Municipal Bus)

Approx 25 minutes by bus and walk

◆Kinkaku-ji

Kinkakuji mae → Shijokarasuma
(Kyoto Municipal Bus)

Approx 35 minutes by bus and walk

◆Ginkaku-ji

Ginkakuji mae → Shijo Kawaramachi
(Kyoto Municipal Bus)

Approx 36 minutes by bus and Walk

