



# SOTETSU GRAND FRESA Sotetsu Grand Fresa Osaka-Namba

Good location with a 2 minute walk from Nippombashi Station on the Osaka Metro Sennichimae Line, Sakaisuji Line, and Kintetsu Namba Line.

Kuromon Market and Dotonbori, tourist attractions representing Osaka such are within walking distance, as well as access from Osaka International Airport (Itami) and Kansai International Airport, making it convenient for leisure as well as business.

This hotel accepts cashless payment. Please use a credit card or QR code payment system for payments of charges.

## ROOM EQUIPMENTS / AMENITY



LCD TV



Video on demand (charges apply)



Wi-Fi available in all rooms



Refrigerator



Electric kettle



Extension telephone



Air purifier with humidifying function



Ionic hair dryer



Shampoo



Conditioner



Body wash



Body sponge



Bath towel



Face towel



Two-piece pajamas



Toothbrush



Razor



Slippers



Air freshener



Women's amenity kit

\* Women's amenity kit is available at the front desk.

\* Mobile charger is lent at the front desk.

### Women's amenity kit



\* Image for illustrative purposes.

### Central type water purification system (Ryosui Kobo)



Ryosui Kobo's central water purification has been implemented. All the water to be used in the hotel including water for the washstand, the shower, and the toilet has been changed into gentle water by it.

## NUMBERS OF GUEST ROOMS : 698

Room Type	Room size (㎡)	Bed size (mm)	Numbers of rooms	Floor
Single	12.0㎡	1200	202	2~14
Double	13.5㎡	1400	277	2~14
Superior Double	13.5㎡	1600	37	2~14
Deluxe Double	17.2㎡	1800	19	2~14
Twin	13.5㎡	1000 × 2	54	2~14
Superior Twin	17.7㎡	1100 × 2	82	2~14
Deluxe Twin (Triple)	18.7㎡	1100 × 2 (sofa bed available)	26	2~14
Universal Twin	25.4㎡	1100 × 2	1	2

● 2 guests available: 698 rooms

● NON-Smoking floor: 2~13

● Smoking floor: 14

## BREAKFAST

### 【MASSE DINING (1st floor)】

OPEN HOURS : 6:30~10:30AM (L.O.10:00)

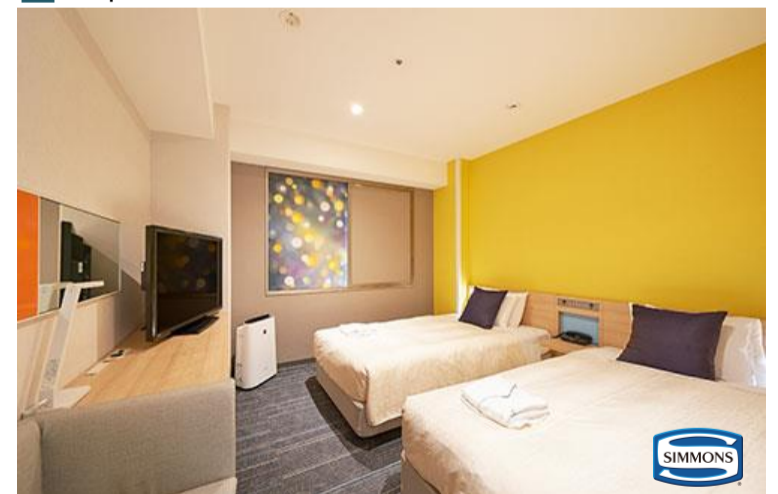
NUMBERS OF SEATS : 196

MENU : Western-Japanese style buffet dishes including Osaka specialties.

Our restaurant offers a brilliant breakfast for those who want to eat a lot in the morning, as well as for those who are conscientious about health.

PRICE : 1,540 yen (tax included)

### Superior Twin



### MASSE DINING



## ABOUT THE HOTEL

ADDRESS : 1-1-13 Nippombashi, Chuo-ku, Osaka City,  
Osaka 542-0073

TEL : (+81)6-7668-2030 FAX : (+81)6-7668-2035

CHECK-IN/OUT : 15:00/11:00

AVAILABLE PAYMENT METHODS : VISA • MASTER • JCB • AMEX • DINERS • DISCOVER • UnionPay  
LINE Pay • PayPay • 楽天ペイ • au PAY • Rpay • ALIPAY • WeChatPay

\*This hotel accepts cashless payment.

E-MAIL : gf\_namba@sotetsu-group.jp

URL : <https://fresa-inn.jp/en/namba/>

ACCESS : A 2 minute walk from Nippombashi Station on the Kintetsu Line  
A 2 minute walk from Nippombashi Station on the Osaka Metro Sakaisuji Line  
A 2 minute walk from Nippombashi Station on the Osaka Metro Sennichimae Line



## LOCATION

\*Estimated travel time is based on Google map.  
\*Osaka Metro = Former municipal subway

- Osaka Sta. / Umeda Sta. → Namba Sta. → Nippombashi Sta. (Approx 22 minutes by train)  
(Osaka Metro Midosuji Line) (Osaka Metro Sennichimae Line)
- Shin-Osaka Sta. → Namba Sta. → Nippombashi Sta. (Approx 25 minutes by train)  
(Osaka Metro Midosuji Line) (Osaka Metro Sennichimae Line)
- Kyoto Sta. → Shin-Osaka Sta. → Namba Sta. → Nippombashi Sta. (Approx 67 minutes by train)  
(JR Tokaido • Sanyo Main Line) (Osaka Metro Midosuji Line) (Osaka Metro Sennichimae Line)
- Kansai International Airport  
Kansai Airport Sta. → Nankai Namba Sta. / Namba Sta. → Nippombashi Sta. (Approx 53 minutes by train)  
(Nankai Limited Express rapid) (Osaka Metro Sennichimae Line)
- Kansai Airport Sta. → Tengachaya Sta. → Nippombashi Sta. (Approx 70 minutes by train)  
(Nankai Airport Line • Airport Express) (Osaka Metro Sakaisuji Line)
- Osaka International Airport (Osaka Itami Airport)  
Osaka Airport → Yamada Sta. → Tenjimbashisuji6-chome → Nippombashi Sta. (Approx 47 minutes by train)  
(Osaka Monorail) (Hankyu Senri Line, Osaka Metro Sakaisuji Line (Direct))
- Universal Studios Japan  
Universal-city Sta. → Nishikujo Sta. → Kintetsu Nippombashi Sta. (Approx 38 minutes by train)  
(JR Sakurajima Line) (Hanshin Namba Line, Kintetsu Nara Line)
- Osaka Castle (Morinomiya Sta.)  
Morinomiya Sta. → Sakaisuji-Hommachi Sta. → Nippombashi Sta. (Approx 31 minutes by train)  
(Osaka Metro Chuo Line) (Osaka Metro Sakaisuji Line)
- Osaka Aquarium Kaiyukan  
Osakako Sta. → Sakaisuji-Hommachi Sta. → Nippombashi Sta. (Approx 34 minutes by train)  
(Osaka Metro Chuo Line) (Osaka Metro Sakaisuji Line)



## FACILITIES



Cashless payments



Smart check-in



Wi-Fi available



Contactless IC key card



Vending machines

Cashless payments



\* Image for illustrative purposes.



Coin-operated laundry



Free amenity area



Courier service  
(cash on delivery only)



Smoking space

Free amenity area



\* Image for illustrative purposes.

## Six Sotetsu Fresa Inn Highlights!

### 1. Heartfelt smiles and hospitality

Offering service that makes you want to come back again

### 2. Excellent location

Located within a five-minute walk from major city stations

### 3. Comfortable livability

Free Wi-Fi, air purifier, high quality beds, two-piece waffle pajamas, and more...

### 4. Design and security

Room IC cards have been enhanced by designers to ensure complete security

### 5. Full set of amenities

Free amenities and ladies' amenities including bath additives and tea bags

### 6. Hygienic facilities

Our specialized staff take pride in their thorough cleaning

SOTETSU  
**FRÉSA**  
INN  
FRESh-Sense-Amenity