



Sotetsu Fresa Inn Chiba-Kashiwa

The home town of "Kashiwa Reysol"
Direct access to the "Tokyo station" and the "Shinagawa station"
is possible because of starting service of the Ueno-Tokyo line.
Relaxing and comfortable space with full security.

ROOM EQUIPMENTS / AMENITY



LCD TV



Video on demand
(charges apply)



Wi-Fi available
in all rooms



Refrigerator



Electric kettle



Extension
telephone



Air purifier with
humidifying
function



Ionic hair
dryer



Shampoo



Conditioner



Body wash



Body sponge



Bath towel



Face towel



Two-piece
pajamas



Toothbrush



Razor



Slippers



Air freshener



Women's
amenity kit



Women's amenity kit

* Image for illustrative purposes.

* Women's amenity kit is offered at the lobby.
* Mobile charger is lent at the front desk.

NUMBERS OF GUEST ROOMS : 153

Room Type	Room size(m ²)	Bed size(mm)	Numbers of rooms	Floor
Single	13.1	1200	7	3~9
Comfort Single (Double)	13.0~13.6	1400	83	3~9
Deluxe Double	13.8~16.2	1600	49	3~9
Twin	18.3	1100 × 2	7	3~9
Deluxe Twin	27.6	1200 × 2 (sofa bed available)	4	6~9
Premium Twin	27.6	1200 × 2 (sofa bed available)	2	4~5
Universal Twin	27.6	1200 × 2	1	3

● 2 guests available: 146 rooms

● Non-Smoking Room: 110 rooms (5~9 floor)
● Smoking Room: 43 rooms (3~4 floor)

BREAKFAST

【LOUNGE (1st floor)】

OPEN HOURS : 6:30~9:30AM(L.O.9:00)

NUMBERS OF SEATS : 32

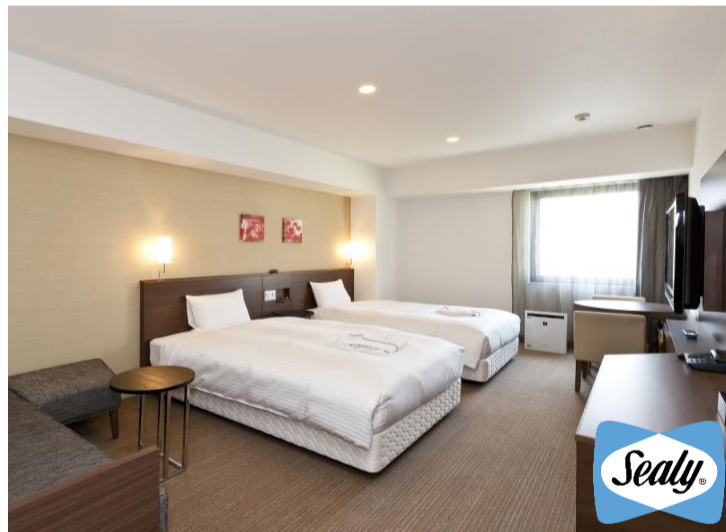
MENU : Japanese style buffet

Daily steamed dishes, hot pot dishes, egg dishes, meat dishes, salad, bread, rice, miso-soup, soup, yogurt, Drinks (coffee, milk, tea, green tea, orange juice)

PRICE : 920 yen (tax included)

* A breakfast ticket is 1,000 JPY in case purchasing the ticket on the day.

Twin



Lobby



ABOUT THE HOTEL

ADDRESS : 2-5-18 Kashiwa, Kashiwa-shi, Chiba 277-0005

TEL : (+81)4-7165-0203 FAX : (+81)4-7165-0208

CHECK-IN/OUT : 15:00/11:00

CREDIT : VISA • MASTER • JCB • AMEX • DINERS • UnionPay

E-MAIL : fresa_kashiwa@sotetsu-group.jp

URL : <https://fresa-inn.jp/en/kashiwa/>

ACCESS : A 4 minute walk from the East Exit in Kashiwa Station on the JR Joban Line and Tobu Noda Lines.

LOCATION

- Ueno Sta. → Kashiwa Sta. (Approx 32 minutes by train)
(JR Joban Line)
- Nippori Sta. → Kashiwa Sta. (Approx 29 minutes by train)
(JR Joban Line)
- Matsudo Sta. → Kashiwa Sta. (Approx 8 minutes by train)
(JR Joban Line)
- Tokyo Sta. → Kashiwa Sta. (Approx 36 minutes by train)
(JR Joban Line)
- Shinagawa Sta. → Kashiwa Sta. (Approx 46 minutes by train)
(JR Tokaido • Joban Line)
- Ikebukuro Sta. → Nippori Sta. → Kashiwa Sta. (Approx 40 minutes by train)
(JR Yamanote Line) (JR Joban Line)
- Narita Airport
Narita Airport Terminal2 Sta. → Shin-Kamagaya Sta. →
(Keisei Narita Airport Line) (TOBU URBAN PARK Line)
Kashiwa Sta. (Approx 70 minutes by train)
- Omiya Sta. → Kashiwa Sta. (Approx 60 minutes by train)
(TOBU URBAN PARK Line)
- Funabashi Sta. → Kashiwa Sta. (Approx 30 minutes by train)
(TOBU URBAN PARK Line)
- Kashiwanoha campus → Nagareyama-otakanomori →
(Tsukuba Express) (TOBU URBAN PARK Line)
Kashiwa Sta. (Approx 15 minutes by train)

FACILITIES

- | | | | | |
|--|--|--|--|---|
| 
Smart check-in | 
Internet section | 
Wi-Fi available | 
Contactless IC key card | 
Vending machines |
| 
Coin-operated laundry | 
Free amenity area | 
Courier service | 
Rental PC | |



Six Sotetsu Fresa Inn Highlights!

1. **Heartfelt smiles and hospitality**
Offering service that makes you want to come back again
2. **Excellent location**
Located within a five-minute walk from major city stations
3. **Comfortable livability**
Free Wi-Fi, air purifier, high quality beds, two-piece waffle pajamas, and more...
4. **Design and security**
Room IC cards have been enhanced by designers to ensure complete security
5. **Full set of amenities**
Free amenities and ladies' amenities including bath additives and tea bags
6. **Hygienic facilities**
Our specialized staff take pride in their thorough cleaning