



# HOTEL SUNROUTE PLAZA SHINJUKU

The Hotel Sunroute Plaza Shinjuku is located in the heart of the metropolis of Tokyo, yet offers a tranquil atmosphere. The ultimate in quality and everything has been thoughtfully considered to change the concept of time and space spent there.

A 3 minute walk from the South Exit of JR Shinjuku Station. Although the hotel is located away from the downtown area and in the heart of the Shinjuku subcenter, you can enjoy a relaxing stay without the hustle and bustle of the city.

Airport limousine buses run in front of the hotel to and from Haneda and Narita airports. The airport limousine bus service is available in front of the hotel for business and leisure travelers of all kinds.

## ROOM EQUIPMENTS / AMENITIES



LCD TV



Wi-Fi available in all rooms



Refrigerator



Electric kettle



Extension telephone



Air purifier with humidifying function



Ionic hair dryer (※)



Shampoo



Conditioner



Body soap



Bath towel



Face towel



Two-piece pajamas



Slippers



Air freshener

※There are some non-ion dryers.

※Other complimentary amenities are available for your choice in the lobby.

## AMENITIES



\* Image for illustrative purposes.

## SOU-BI-SUI

(Water purification system in the entire building)



By installing the Ryosui Kobo water purification system in the entire hotel, all the water in the hotel turns into gentle SOU-BI-SUI water, including water in the sink, shower and toilet in the guest rooms.

## NUMBERS OF GUEST ROOMS :624

Roon Type	Roon Type (㎡)	Bed size(mm)	Maximum number of people	Number of rooms	Floor
Standard Single(Semi-Double) *	15.7	1400	2	444	3～14
Standard Double	18.7	1600	2	36	3～14
Standard Twin	23.1	1200	2	111	3～14
Deluxe Twin(Triple)	28.2	1200 (with sofa)	3	12	3～14
Twin(With Sofa)(Triple)	26.7	1200 (with sofa)	3	12	3～14
Universal Double	24.1	1600	2	5	3
Universal Twin	24.1	1100 (with electric bed)	2	4	3

\* It can be occupied by business travelers, as well as by two guests as a Semi-Double room.

● All rooms are NON-Smoking

## BREAKFAST

Restaurant 【VILLAZZA】(1st floor)

OPEN HOURS : 6:30～10:00 (Last order 9:30)

NUMBERS OF SEATS : 185

MENU : Buffet with a variety of Japanese, Western, Chinese and ethnic dishes  
we offer a luxurious buffet with more than 50 dishes, including fresh vegetables and fruits, a wide variety of freshly baked breads, dishes baked in a stone kiln, and noodles of the day.

PRICE : JPY 2,200 (tax included)  
Child (elementary school) JPY 1,100 (tax included)  
0-6 years old free

## Standard Twin



## VILLAZZA





## ABOUT THE HOTEL

ADDRESS : 2-3-1Yoyogi, Shibuya-ku, Tokyo, 151-0053 Japan

TEL : (+81) 3-3375-3211 / FAX:(+81) 3-5365-4110

CHECK-IN/OUT : 15:00/11:00

AVAILABLE PAYMENT : CASH・VISA・MASTER・JCB・AMEX・DINERS・DISCOVER・UnionPay

METHODS PayPay・Rakuten Pay・d barai・au PAY・LINE Pay・Alipay+・WeChat Pay

E-MAIL : plaza-shinjuku@sunroute.jp

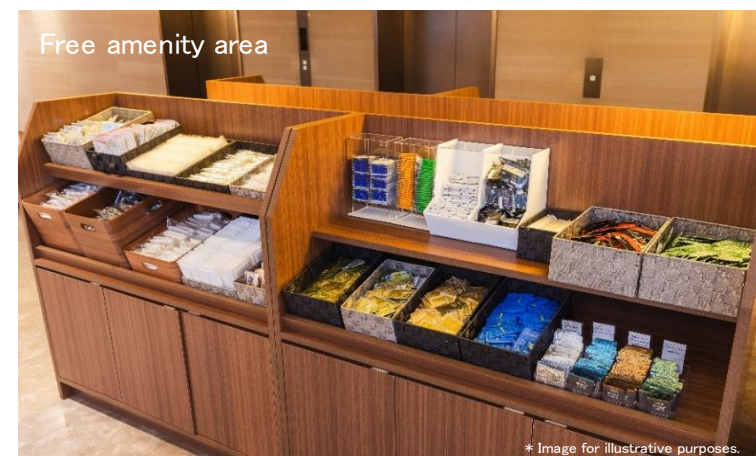
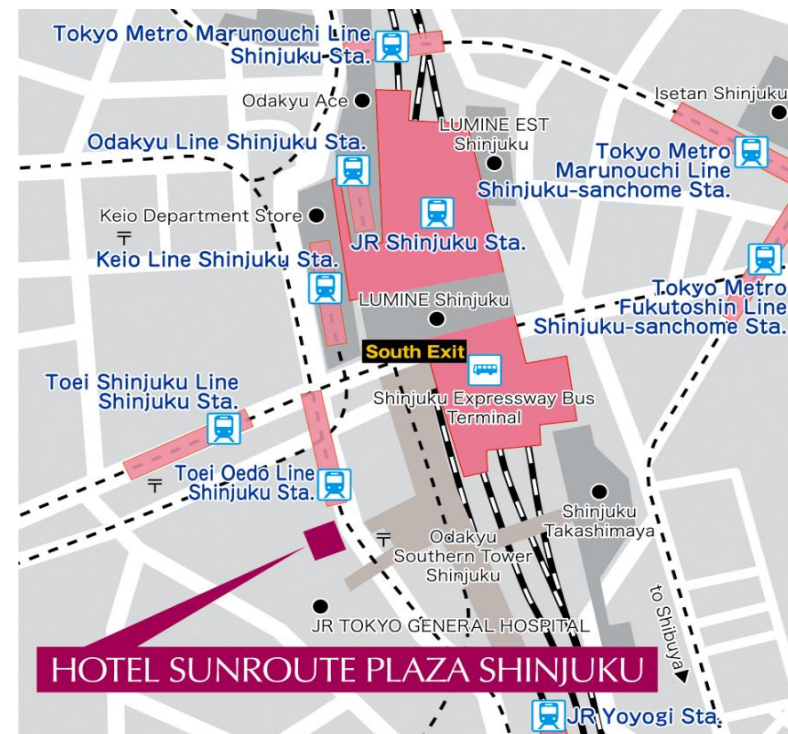
URL : <https://sunrouteplazashinjuku.jp/>

ACCESS : A 3 minute walk from the South Exit of JR Shinjuku Station  
A 3 minute walk from the Koshu-Kaido Ticket Gate of Shinjuku Station  
One minute's walk from Shinjuku Station and A1 Exit (Maynds Tower Exit)  
on the Toei Oedo Line

## LOCATION

- Shinagawa Sta. →Shinjuku Sta.(Approx 20 minutes by train)  
(JR Yamanote Line)
- Tokyo Sta. →Shinjuku Sta.(Approx 15 minutes by train)  
(JR Chuo Line Rapid)
- Tokyo Disney Resort(Maihama Sta.)  
Maihama Sta.→Tokyo Sta.→Shinjuku Sta.(Approx 50 minutes by train)  
(JR Keiyo Line) (JR Chuo Line Rapid)
- Tokyo Big Sight(Tokyo International Exhibition Center)  
Kokusaitenjijo Sta.→Shinjuku Sta.(Approx 25 minutes by train)  
(JR Rinkai Line through Saikyo Line)
- Lake Kawaguchi・Mt.Fuji area(Kawaguchiko Sta.)  
Kawaguchiko Sta.→Shinjuku Expressway Bus Terminal(Approx 110 minutes by train)
- Haneda Airport  
Haneda Airport Terminal 1・2 Sta.→Shinagawa Sta.→Shinjuku Sta.(Approx 50 minutes by train)  
(Keikyu Airport Line Rapid) (JR Yamanote Line)  
Haneda Airport→Hotel Sunroute Plaza Shinjuku (Approx 60 minutes by airport limousine bus)  
(Airport Limousine Bus)
- Narita Airport  
Narita Airport Sta.→Shinjuku Sta.(Approx 80 minutes by train)  
(Narita Express)  
Narita Airport→Hotel Sunroute Plaza Shinjuku (Approx 120 minutes by airport limousine bus)  
(Airport Limousine Bus)

\*Estimated travel time is based on the Google map.



## FACILITIES

- Smart check-in
- Self Check-in & out Machines
- Wi-Fi available
- Contactless IC key card
- Vending machines
- Coin-operated laundry
- Courier service (cash on delivery only)
- Smoking space
- Bus stops to/from airport

## CONFERENCES / BANQUETS

### Main Conference Room(1st floor)

- 「Fuyo」(can be divided into three separate rooms)

Classroom:182 guests

Stand-up dining:180 guests

### Small Conference Room(2nd floor)

- Cattleya

Classroom:35 guests

- Menuette/Freesia

Classroom:24 guests

## Six HOTEL SUNROUTE Highlights

### 1. Hospitality with a smile all the time

We provide the kind of service that will make you want to come back..

### 2. Convenient access, with hotels in Japan and overseas

Our hotels are very convenient as a travel hub for both business and leisure.

### 3. A variety of guest rooms and facilities

Aside from guest rooms that suit your needs, we also have facilities that you can use for banquets and meetings.

### 4. Full breakfast

We offer a wide variety of buffets and casual set menus.

### 5. Initiatives for the environment

With the cooperation of our guests, we strive to preserve the environment the best way we can.

### 6. Membership program

SOTETSU HOTELS CLUB offers a variety of benefits

  
HOTEL SUNROUTE