



Sotetsu Fresa Inn Tokyo-Roppongi

Located in the center of Roppongi. It only takes one minute's walk from Roppongi Station. You can conveniently access to the sightseeing spots and business area in Tokyo, so it is suitable for both leisure and business use.

Also Roppongi is one of the most popular area to enjoy the night time.

You can spend a fun night without worrying about the last train.

We accept cashless payments only – credit card or QR code payments.

Please use a credit card or QR code payment system for payments of room charges.

We do not accept cash payments.

ROOM EQUIPMENTS / AMENITY



LCD TV



Video on demand
(charges apply)



Wi-Fi



Refrigerator



Electric kettle



Extension telephone



Air purifier with humidifying function



Ionic hair dryer



Shampoo



Conditioner



Body wash



Bath towel



Face towel



Two-piece pajamas



Slippers



Air freshener

* Other complimentary amenities are available for your choice in the lobby.

* Mobile charger is lent at the front desk.

Skin care / Hair care amenities



* Image for illustrative purposes.

NUMBERS OF GUEST ROOMS : 201

Room Type	Room size (㎡)	Bed size(mm)	Maximum number of people	Number of rooms	Floor
Semi-Double	10.6	1200	1	9	3~11
Double	10.1~11.8	1400	2	142	3~11
Twin	13.1~14.6	1100×2	2	28	3~11
Relax Twin	15.5~16.5	1200×2	2	3	2
Connecting Superior Twin	14.2	1200×2	2	9	3~11
Connecting Double	11.5	1400	2	9	3~11
Universal Double	18.0	1600	2	1	2

BREAKFAST

【SUZU CAFE (1st floor)】

OPEN HOURS : 6:45~10:00 (Last order 9:45)

NUMBERS OF SEATS : 55

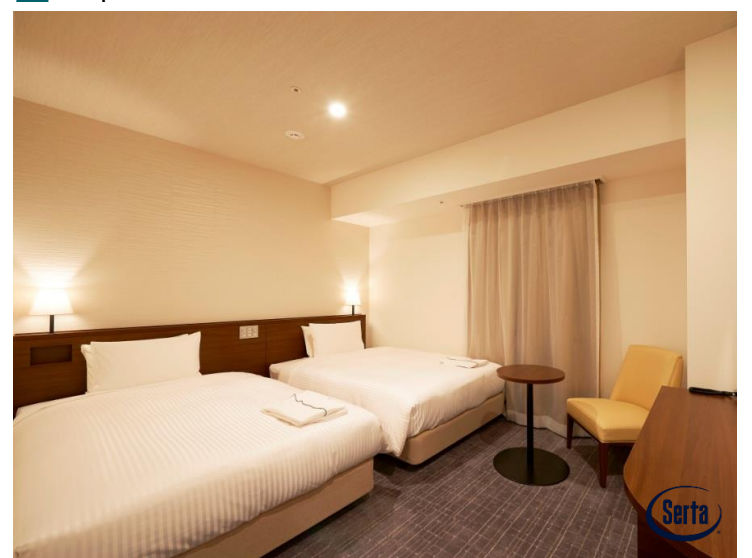
MENU : We are preparing a variety of Japanese and Western dishes, and tea bar which is good for a refreshing morning.

For coffee, we are using UTZ certified coffee beans.

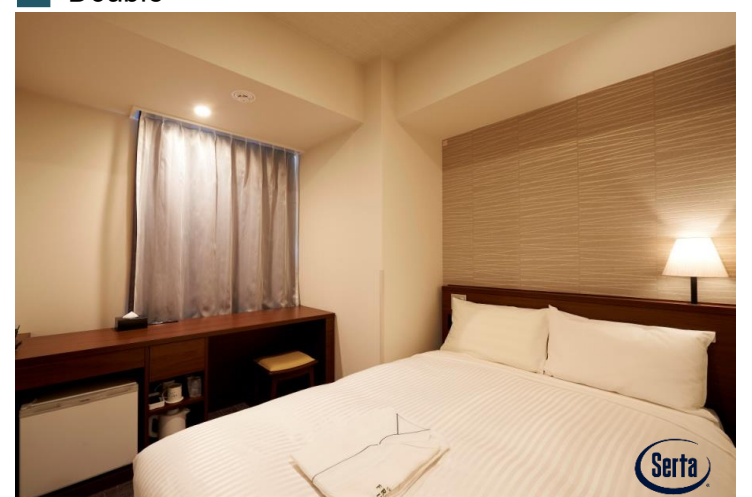
Offering you fresh taste and smell of coffee.

PRICE : JPY 1,320 (tax included)

Superior Twin



Double



ABOUT THE HOTEL

ADDRESS : 3-10-1 Roppongi, Minato-ku, Tokyo 106-0032
TEL : (+81)3-5413-3486 FAX : (+81)3-5413-3487
CHECK-IN/OUT : 15:00/11:00
AVAILABLE PAYMENT : VISA・MASTER・JCB・AMEX・DINERS・DISCOVER・UnionPay
METHODS PayPay・Rakuten Pay・d barai・au PAY・LINE Pay・Alipay+・WeChat Pay
* We accept cashless payment only. (no cash)
E-MAIL : fresa_roppongi@sotetsu-group.jp
URL : <https://sotetsu-hotels.com/en/fresa-inn/roppongi/>
ACCESS : One minute's walk from Exit 5 in Roppongi Station on the Tokyo Metro Hibiya Line and on the Toei Oedo Lines
A 2 minute walk from Exit 3 in Roppongi Station on the Tokyo Metro Hibiya Line and on the Toei Oedo Lines

LOCATION

- Tokyo Sta. → Kasumigaseki Sta. → Roppongi Sta.(Approx 12 minutes by train)
(Tokyo Metro Marunouchi Line) (Tokyo Metro Hibiya Line)
- Shibuya Sta. → Aoyama-itchome Sta. → Roppongi Sta.(Approx 12 minutes by train)
(Tokyo Metro Ginza Line) (Toei Oedo Line)
- Harajuku Sta. → Ebisu Sta. → Roppongi Sta.(Approx 16 minutes by train)
(JR Yamanote Line) (Tokyo Metro Hibiya Line)
- Omote-sando Sta. → Aoyama-itchome Sta. → Roppongi Sta.(Approx 8 minutes by train)
(Tokyo Metro Ginza Line) (Toei Oedo Line)
- Shinjuku Sta. → Roppongi Sta.(Approx 9 minutes by train)
(Toei Oedo Line)
- Ginza Sta. → Roppongi Sta.(Approx 9 minutes by train)
(Tokyo Metro Hibiya Line)
- Akihabara sta. → Roppongi Sta.(Approx 21 minutes by train)
(Tokyo Metro Hibiya Line)
- Haneda Airport Terminal 2 → Hamamatsucho Sta. → Daimon Sta. → Roppongi Sta.(Approx 39 minutes by train)
(Tokyo Monorail) (9 minutes on foot) (Toei Oedo Line)
- Narita Airport Terminal 2 → Tokyo Sta. → Kasumigaseki Sta. → Roppongi Sta.(Approx 77 minutes by train)
(JR Narita Express) (Tokyo Metro Marunouchi Line) (Tokyo Metro Hibiya Line)
- Tokyo Disney Resort® → Resort Gateway Sta. → Maihama Sta. → Hatchobori Sta. → Roppongi Sta.(Approx 52 minutes by train)
(Tokyo Disney Resort Line.) (7 minutes on foot) (JR Keiyo Line) (Tokyo Metro Hibiya Line)
- Tokyo International Forum → Tokyo Sta. → Kasumigaseki Sta. → Roppongi Sta.(Approx 18 minutes by train)
(6 minutes on foot) (Tokyo Metro Marunouchi Line) (Tokyo Metro Hibiya Line)
- TOKYO DOME → Korakuen Sta. → Ginza Sta. → Roppongi Sta.(Approx 23 minutes by train)
(Walking) (Tokyo Metro Marunouchi Line) (Tokyo Metro Hibiya Line)
- ROPPONGI HILLS (Approx 10 minutes on foot)
- TOKYO MIDTOWN (Approx 7 minutes on foot)
- Tsukiji Outer Market → Tsukijishijo Sta. → Roppongi Sta.(Approx 12 minutes by train)
(Walking) (Toei Oedo Line)
- Tokyo Tower → Kamiyacho Sta. → Roppongi Sta.(Approx 9 minutes by train)
(7 minutes on foot) (Tokyo Metro Hibiya Line)
- Tokyo SKYTREE → Oshiage[SKYTREE] → Daimon Sta. → Roppongi Sta.(Approx 29 minutes by train)
(Walking) (Toei Asakusa Line) (Toei Oedo Line)

FACILITIES



Cashless
payments only
(no cash)



Self Check-in &
out Machines



Smart check-in



Wi-Fi



Contactless
IC key card



Vending
machines



Coin-operated
laundry



Free amenity
area



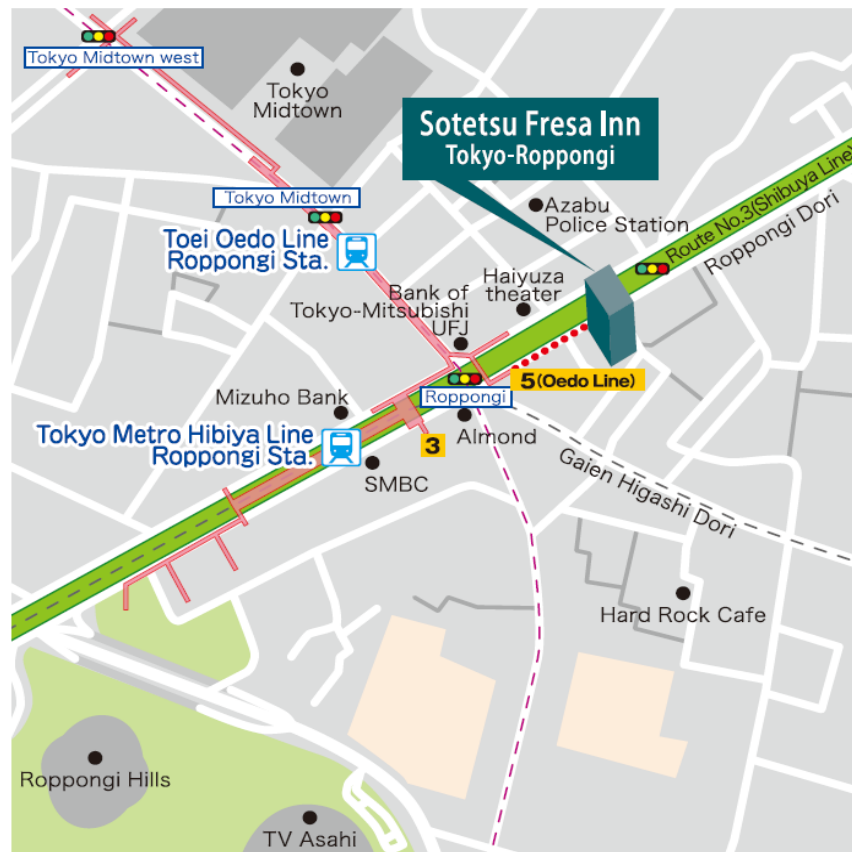
Courier service



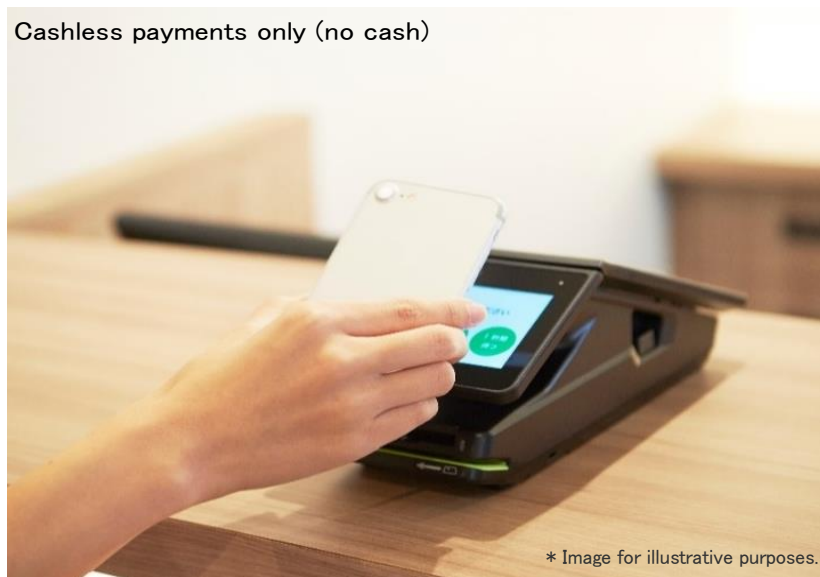
Rental PC



Smoking space



Cashless payments only (no cash)



* Image for illustrative purposes.

Self Check-in / Check-out Machines



* Image for illustrative purposes.

Free amenity area



* Image for illustrative purposes.

Six SOTETSU FRESA INN Highlights

1. Heartfelt smiles and hospitality

Offering service that makes you want to come back again

2. Excellent location

Located within a 5 minute walk from major city stations

3. Comfortable livability

Free Wi-Fi, humidifying air purifier, and high quality beds are available

4. Full set of amenities

Bath additives, facial cleansers, tea bags, etc., are available for your convenience

5. Hygienic facilities

Professional staff will prepare clean rooms to welcome the guests

6. Membership program

SOTETSU HOTELS CLUB offers a variety of benefits

SOTETSU
FRESA
INN
FRESH・SENSE・AMENITY