



Sotetsu Fresa Inn Ochanomizu-Jimbocho

A 3 minute walk from Jimbocho Station.

Located within walking distance of Ochanomizu and Suidobashi, this hotel is perfect for business or sightseeing.

This hotel accepts cashless payment. Please use a credit card or QR code payment system for payments of charges.

ROOM EQUIPMENTS / AMENITY



LCD TV



Video on demand (charges apply)



Wi-Fi available in all rooms



Refrigerator



Electric kettle



Extension telephone



Air purifier with humidifying function



Ionic hair dryer



Shampoo



Conditioner



Body wash



Bath towel



Face towel



Body sponge



Two-piece pajamas



Toothbrush



Razor



Slippers



Air freshener



Women's amenity kit



Women's amenity kit

* Image for illustrative purposes.

* Women's amenity kit is offered at the lobby.
* Mobile charger is lent at the front desk.

NUMBERS OF GUEST ROOMS : 130

| Room Type | Room size(m ²) | Bed size(mm) | Numbers of rooms | Floor |
|-----------------|----------------------------|-----------------------------------|------------------|-------|
| Single | 9.0~9.5 | 1,200 | 35 | 2~8 |
| Double | 9.5~10.3 | 1,400 | 34 | 2~9 |
| Superior Double | 11.5 | 1,400 | 30 | 2~9 |
| Comfort Double | 11.3 | 1,400 | 8 | 2~9 |
| Deluxe Double | 11.4~11.9 | 1,600 | 12 | 3~8 |
| Relax Double | 13.5 | 1,400 (sofa bed available) | 2 | 9 |
| Twin | 13.6 | 1,200 × 2 | 6 | 3~8 |
| Boutique Twin | 18.3 | 1,200 × 2 (sofa bed available) | 2 | 9 |
| Universal Twin | 20.4 | 1,200 × 2 | 1 | 2 |

● 2 guests available: 95 rooms

● Non-Smoking Room: 96 rooms (2,3,5,6,7,8,9 floor)
● Smoking Room: 34 rooms (4,8 floor)

BREAKFAST

【LITTLE MERMAID (1st floor)】

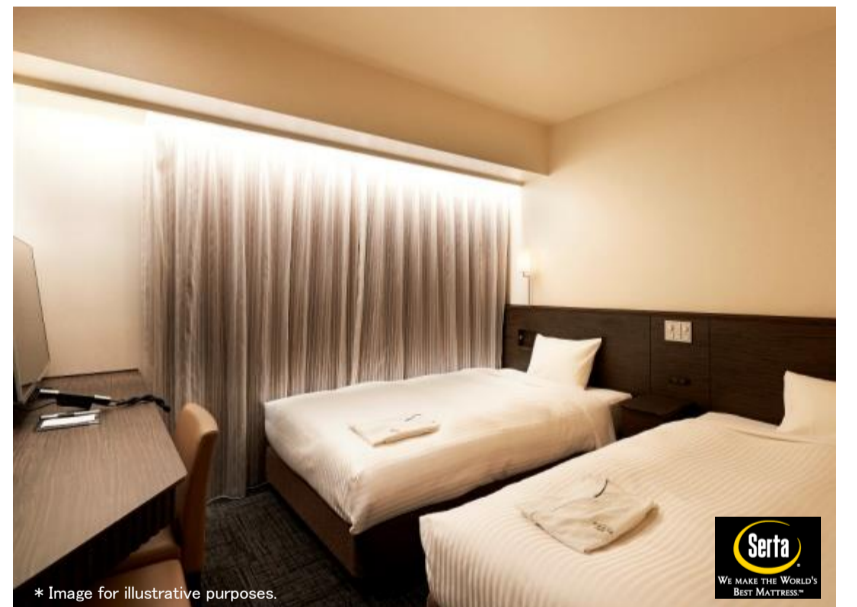
OPEN HOURS : 6:30~10:00AM(9:30L.O.)

NUMBERS OF SEATS : 30

MENU : Enjoy LITTLE MERMAID's freshly baked bread in sets of 3 kinds that changes everyday. Plain breads are ready for a second serving. Salad,yogurt, free drink(Coffee / tea) etc.

PRICE : 800 yen (tax included)

Twin



* Image for illustrative purposes.



LITTLE MERMAID (1st floor)

ABOUT THE HOTEL

ADDRESS : 1-19-7 Kanda-jimbocho, Chiyoda-ku, Tokyo 101-0051

TEL : (+81)3-3518-8203 FAX : (+81)3-3518-8208

CHECK-IN/OUT : 15:00/11:00

AVAILABLE PAYMENT : VISA・MASTER・JCB・AMEX・DINERS・DISCOVER・UnionPay

METHODS : LINE Pay・PayPay・d払い・au PAY・Rpay・ALIPAY・WeChatPay

*This hotel accepts cashless payment.

E-mail : fresa_jinbocho@sotetsu-group.jp

URL : <https://fresa-inn.jp/en/jinbocho/>

ACCESS : A 4 minute walk from Exit A7 in Jimbocho Station on the Tokyo Metro Hanzomon Line, Toei Shinjuku and Mita Lines
 A 8 minute walk from the Ochanomizubashi Exit in Ochanomizu Station on the JR Sobu and Chuo Lines
 A 9 minute walk from Exit 1 (Exit JR) in Ochanomizu Station on the Tokyo Metro Marunouchi line
 A 6 minute walk from Exit B3 in Shin-ochanomizu Station on the Tokyo Metro Chiyoda line
 A 6 minute walk from Exit B7 in Ogawamachi Station on the Toei Shinjuku line
 A 6 minute walk from Exit B7 in Awajicho Station on the Tokyo Metro Marunouchi line



LOCATION

- Tokyo Sta. → Ochanomizu Sta. (Approx 4 minutes by train)
(JR Chuo Line)
- Tokyo Sta. → Otemachi Sta. → Jimbocho Sta. (Approx 6 minutes by train)
(Tokyo Metro Marunouchi Line) (Tokyo Metro Hanzomon Line)
- Kanda Sta. → Ochanomizu Sta. (Approx 2 minutes by train)
(JR Chuo Line)
- Ginza Sta. → Ochanomizu Sta. (Approx 8 minutes by train)
(Tokyo Metro Marunouchi Line)
- Shinagawa Sta. → Tokyo Sta. → Ochanomizu Sta. (Approx 17 minutes by train)
(JR Keihin-tohoku Line) (JR Chuo Line)
- Shinjuku Sta. → Ochanomizu Sta. (Approx 9 minutes by train)
(JR Chuo Line)
- Shinjuku Sta. → Jimbocho Sta. (Approx 11 minutes by train)
(Toei Subway Shinjuku Line)
- Ueno Sta. → Mitsukoshimae Sta. → Jimbocho sta. (Approx 17 minutes by train)
(Tokyo Metro Ginza Line) (Tokyo Metro Hanzomon Line)
- Akihabara Sta. → Ochanomizu Sta. (Approx 2 minutes by train)
(JR Chuo Line)
- Asakusa Sta. → Mitsukoshimae Sta. → Jimbocho Sta. (Approx 22 minutes by train)
(Tokyo Metro Ginza Line) (Tokyo Metro Hanzomon Line)
- Haneda Airport
Haneda Airport Sta. → Mita Sta. → Jimbocho Sta. (Approx 38 minutes by train)
(Keikyu Airport Line) (Toei Subway Mita Line)
- Narita Airport (Approx 75 minutes by train)
Narita Airport Line → Higashi-nihombashi Sta. → Bakuro yokoyama Sta. → Jimbocho Sta.
(Keisei Narita Sky Access Line) (Walking) (Toei Subway Shinjuku Line)
- TOKYO DOME
Suidobashi → Ochanomizu Sta. (Approx 1 minutes by train)
(JR Sobu Line)
- Nippon Budokan
Kudanshita Sta. → Jimbocho Sta. (Approx 1 minutes by train)
(Tokyo Metro Hanzomon Line) (Toei Shinjuku Line)
- Tokyo Disney Resort
Maihama Sta. → Tokyo Sta. → Ochanomizu Sta. (Approx 30 minutes by train)
(JR Keiyo Line) (JR Chuo Line)



FACILITIES

- Cashless payments
- Smart check-in
- Internet section
- Wi-Fi available
- Contactless IC key card
- Vending machines
- Coin-operated laundry
- Courier service
- Rental PC
- Free amenity area



Six Sotetsu Fresa Inn Highlights!

1. Heartfelt smiles and hospitality
Offering service that makes you want to come back again
2. Excellent location
Located within a five-minute walk from major city stations
3. Comfortable livability
Free Wi-Fi, air purifier, high quality beds, two-piece waffle pajamas, and more...
4. Design and security
Room IC cards have been enhanced by designers to ensure complete security
5. Full set of amenities
Free amenities and ladies' amenities including bath additives and tea bags
6. Hygienic facilities
Our specialized staff take pride in their thorough cleaning

