



Sotetsu Fresa Inn Hamamatsucho-Daimon

Conveniently situated in the heart of the city and close to Haneda Airport
Elegantly furnished rooms for business and leisure travellers
All rooms are fully equipped with reliable security facilities.
We accept cashless payments only – credit card or QR code payments.
Please use a credit card or QR code payment system for payments of room charges. We do not accept cash payments.

ROOM EQUIPMENTS / AMENITY



LCD TV



Video on demand (charges apply)



Wi-Fi



Cool box



Electric kettle



Extension telephone



With humidifier function
Air purifier



Ionic hair dryer



Shampoo



Conditioner



Body wash



Bath towel



Face towel



Two-piece pajamas



Slippers



Air freshener

* Other complimentary amenities are available for your choice in the lobby.
* Mobile charger is lent at the front desk.

Skin care / Hair care amenities



* Image for illustrative purposes.

NUMBERS OF GUEST ROOMS : 190

Room Type	Room size (㎡)	Bed size(mm)	Maximum number of people	Number of rooms	Floor
Single	11.3~13.2	1200	1	48	3~14
Double	11.2~11.9	1400	2	136	2~14
Double (Connecting)	11.2~11.9	1400	2	4	2
Twin (Connecting)	22.1	1200 × 2	2	1	2
Universal Twin (Connecting)	23.8	1200 × 2	2	1	2

- Non-Smoking Room: 145 rooms (2~6・8・10~12・14 floor)
- Smoking Room: 45 rooms (7・9・13 floor)

BREAKFAST

【Lounge (1F)】

OPEN HOURS : 6:30~10:00AM (Last order 9:30)

NUMBERS OF SEATS : 36

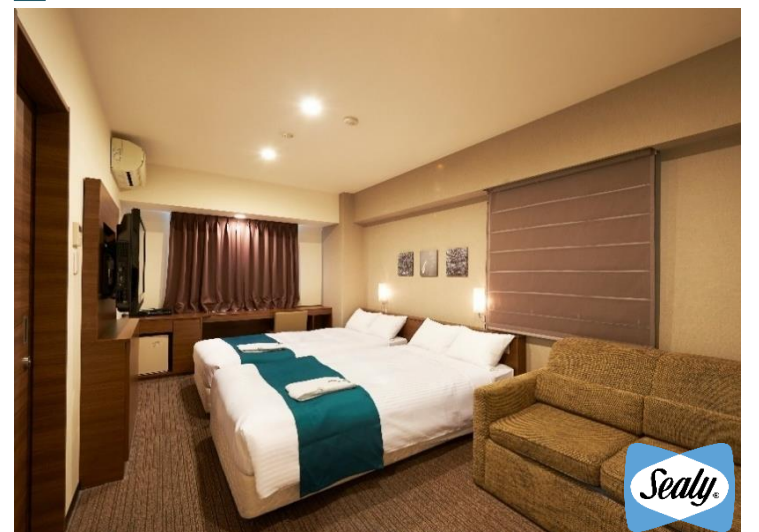
MENU : Buffet-style breakfast mainly with Japanese cuisine

In addition to regular daily menu such as egg dishes, meat dishes, salad, we mainly serve Japanese dishes such as daily Japanese hot pot, daily steamed dishes and side dishes.

PRICE : JPY 1,130 (tax included)

0~6 years old free

Twin



Breakfast



Lounge (Lobby floor)

ABOUT THE HOTEL

ADDRESS : 1-2-7 Shibadaimon, Minato-ku, Tokyo 105-0012
 TEL : (+81)3-5472-2031 FAX:(+81)3-5472-2035
 CHECK-IN/OUT : 15:00 / 11:00
 AVAILABLE PAYMENT : VISA・MASTER・JCB・AMEX・DINERS・DISCOVER・UnionPay
 METHODS PayPay・Rpay・d barai・au PAY・LINE Pay・Alipay+・WeChat Pay□
 * We accept cashless payment only. (no cash)
 E-MAIL : fresa_daimon@sotetsu-group.jp
 URL : <https://sotetsu-hotels.com/en/fresa-inn/daimon/>
 ACCESS : A 8 minute walk from North Exit of Hamamatsucho Station
 on the JR Yamanote Line and Keihin-Tohoku Lines
 A 8 minute walk from Monorail Hamamatsucho Station
 on the Tokyo Monorail Line
 A 4 minute walk from Exit A5 of Daimon Station on the
 Toei Asakusa and Oedo Lines
 A 4 minute walk from Exit A3 of Onarimon Station on the Toei Mita Line

LOCATION

- Tokyo Sta. → Hamamatsu Sta. (Approx 6 minutes by train)
(JR Yamanote Line・Keihin-tohoku Line)
- Shinjuku Sta. → Daimon Sta. (Approx 16 minutes by train)
(Toei Oedo Line)
- Shinagawa Sta. → Hamamatsucho Sta. (Approx 5 minutes by train)
(JR Yamanote Line・Keihin-tohoku Line)
- Ueno Sta. → Hamamatsucho Sta. (Approx 14 minutes by train)
(JR Yamanote Line・Keihin-tohoku Line)
- Asakusa Sta. → Daimon Sta. (Approx 15 minutes by train)
(Toei Oedo Line)
- Tokyo International Exhibition Center (Tokyo Big Sight)
Kokusai-tenjijoseimon Sta. → Shiodome Sta. → Daimon Sta. (Approx 29 minutes by train)
(Yurikamome) (Toei Oedo Line)
- TOKYO DOME
Onarimon Sta. → Suidobashi Sta. (Approx 10 minutes by train)
(Toei Mita Line)
- Haneda Airport
Haneda Airport Terminal1 Sta. → Hamamatsucho Sta. (Approx 26 minutes by train)
(Tokyo Monorail)

Haneda Airport International Terminal Sta. → Daimon Sta. (Approx 20 minutes by train)
(Toei Asakusa Line・Keikyu Airport Line)
- Narita Airport
Narita Airport (Terminal1) Sta. → Aoto Sta. → Daimon Sta. (Approx 84 minutes by train)
(Keisei Narita Airport Line) (Toei Asakusa Line)
- Tokyo SKYTREE
Oshiage (Tokyo SKYTREE) Sta. → Daimon Sta. (Approx 19 minutes by train)
(Toei Asakusa Line)
- Tokyo Disney Resort
Maihama Sta. → Shin-kiba Sta. → Tsukishima Sta. → Dimonn Sta. (Approx 34 minutes by train)
(JR Keiyo Line) (Tokyo Metro Yurakucho Line) (Toei Oedo Line)



Cashless payments only (no cash)






Self Check-in / Check-out Machines



Free amenity area
Internet section



FACILITIES

- | | | | | |
|---|--|---|--|---|
| 
Cashless
payments only
(no cash) | 
Self Check-in &
out Machines | 
Smart check-in | 
Wi-Fi | 
Contactless
IC key card |
| 
Vending
machines | 
Coin-operated
laundry | 
Free amenity
area | 
Courier service | |

Six SOTETSU FRESA INN Highlights

- Heartfelt smiles and hospitality**
Offering service that makes you want to come back again
- Excellent location**
Located within a 5 minute walk from major city stations
- Comfortable livability**
Free Wi-Fi, humidifying air purifier, and high quality beds are available
- Full set of amenities**
Bath additives, facial cleansers, tea bags, etc., are available for your convenience
- Hygienic facilities**
Professional staff will prepare clean rooms to welcome the guests
- Membership program**
SOTETSU HOTELS CLUB offers a variety of benefits

SOTETSU
FRESA
 INN
 FREsh・Sense・Amenity