



SOTETSU
FRESA
INN
FRESH · SENSE · AMENITY

Sotetsu Fresa Inn Tokyo-Kinshicho

Sotetsu Fresa Inn Tokyo-Kinshicho is offering you direct access to major landmarks and areas such as Tokyo Sky Tree, Shinjuku, Akihabara, and Shibuya from the nearest stations.

Also you can visit those areas Ueno, Asakusa, Ginza, and Harajuku with only 1 time train transfer.

Our hotel can be your convenient base while your trip to Tokyo.

We accept cashless payments only – credit card or QR code payments.

Please use a credit card or QR code payment system for payments of room charges.

We do not accept cash payments.

ROOM EQUIPMENTS / AMENITY



LCD TV



Pay broadcast



Wi-Fi



Refrigerator



Electric kettle



Extension telephone



Air purifier with humidifying function



Ionic hair dryer



Shampoo



Conditioner



Body wash



Bath towel



Face towel



Two-piece pajamas



Slippers



Air freshener



Extension cord

* Other complimentary amenities are available for your choice in the lobby.

* Mobile charger is lent at the front desk.

Skin care / Hair care amenities



* Image for illustrative purposes.

NUMBERS OF GUEST ROOMS : 281

Room Type	Room size (㎡)	Bed size(mm)	Maximum number of people	Numbers of rooms	Floor
Compact Single	11.2~11.7	1000	1	39	2~14
Single	11.0~12.5	1200	1	32	2~14
Superior Single	14.4	1200	1	12	2~14
Casual Double	11.8~12.1	1400	2	57	2~14
Double	12.1~12.8	1400	2	60	2~14
Comfort Double	11.5	1600	2	12	2~14
Corner Double	14.3	1400	2	11	2~12
Twin	15.0~15.7	1000 × 2	2	24	2~14
Connecting Twin	31.4	1000 × 4台	4	13	2~14
Superior Twin	17.3~20.6	1200 × 2	2	12	3~14
Comfort Twin	26.0	1100 × 2 (extra bed available)	3	2	13~14
Relax Twin	24.5	1100 × 2 (sofa bed available)	3	2	13~14
Triple	24.5	1200 × 3	3	4	13~14
Universal Double	20.6	1600	2	1	2

● Non-Smoking Room: 236 rooms (2~8, 11~14 floor)

● Smoking Room: 45 rooms (9, 10 floor)

BREAKFAST

【SHIKI DINING (1st floor)】

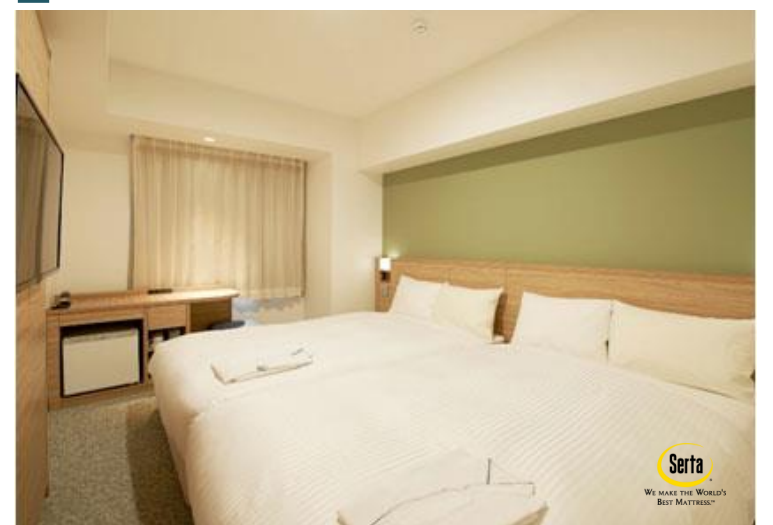
OPEN HOURS : 6:30~10:00(L.O.9:30)

NUMBERS OF SEATS : 67

MENU : Japanese and Western-style buffet

PRICE : 1,100 yen (tax included)

Twin



Breakfast



* Image for illustrative purposes.

ABOUT THE HOTEL

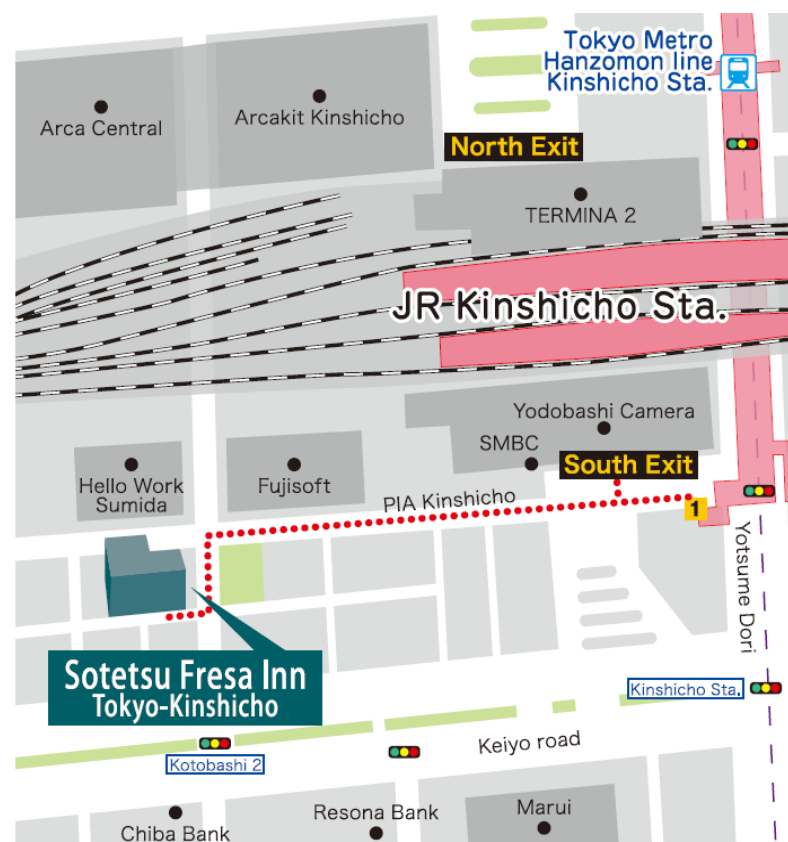
ADDRESS : 2-18-7 Kotobashi, Sumida-ku, Tokyo 130-0022
 TEL : (+81)3-5625-4203 FAX : (+81)3-5625-3381
 CHECK-IN/OUT : 15:00/11:00
 AVAILABLE PAYMENT : VISA・MASTER・JCB・AMEX・DINERS・DISCOVER・UnionPay
 METHODS LINE Pay・PayPay・d barai・au PAY・Rpay・ALIPAY・WeChatPay
 * We accept cashless payment only. (no cash)
 E-mail : fresa_kinshicho@sotetsu-group.jp
 URL : <https://sotetsu-hotels.com/en/fresa-inn/kinshicho/>
 ACCESS : A 3 minute walk from the South Exit in Kinshicho Station on the JR Sobu Line
 A 3 minute walk from Exit 1 in Kinshicho Station on the Tokyo Metro Hanzomon Line

LOCATION

- Haneda Airport
 Haneda Airport Terminal1 → Kinshicho Railway Sta. (Approx 35 minutes by bus)
 (TOBU BUS Skytree Shuttle・KEIKYU BUS)
 Haneda Airport Domestic terminal → Asakusabashi Sta. →
 (Keiiky Main Line Asakusa Line direct) (JR Sobu Line)
 → Kinshicho Sta.(Approx 45 minutes by train)
- Narita Airport
 Narita Airport Terminal2 → Tobu Hotel levant Tokyo →
 (Tokyo Airport Bus)
 → Kinshicho Sta.(Approx 110 minutes by bus and walk)
 (Walking)
- Narita Airport Terminal2 → Oshiage(SKYTREE) Sta. → Kinshicho Sta.(Approx 60 minutes by train)
 (Keisei Narita Airport Line) (Tokyo Metro Hanzomon Line)
- Tokyo Sta. → Kinshicho Sta. (Approx 8 minutes by train)
 (JR Sobu Line)
- Shinjuku Sta. → Kinshicho Sta.(Approx 24 minutes by train)
 (JR Chuo Sobu Line)
- Shibuya Sta. → Kinshicho Sta.(Approx 28 minutes by train)
 (Tokyo Metro Hanzomon Line)
- Akihabara Sta. → Kinshicho Sta.(Approx 7 minutes by train)
 (JR Chuo Sobu Line)
- Tokyo SKYTREE
 Kinshicho Sta. → Oshiage(SKYTREE) Sta.(Approx 2 minutes by train)
 (Tokyo Metro Hanzomon Line)
- RYOGOKU KOKUGIKAN
 Kinshicho Sta. → Ryogoku Sta.(Approx 3 minutes by train)
 (JR Chuo Sobu Line)
- Senso-ji
 Kinshicho Sta. → Nitenmon (Approx 16 minutes by bus)
 (Toei Bus)
- Tokyo Disney Resort
 Kinshicho Sta. → Tokyo Disneyland・ DisneySea (Approx 40 minutes by bus)
 (TOBU BUS Skytree Shuttle)
- TOKYO DOME
 Kinshicho Sta. → Suidobashi Sta.(Approx 11 minutes by train)
 (JR Chuo Sobu Line)
- Nippon Budokan
 Kinshicho Sta. → Kudanshita Sta.(Approx 16 minutes by train)
 (Tokyo Metro Hanzomon Line)

FACILITIES

- | | | | | | |
|---|---|--|---|--|--|
| 
Cashless payments only (no cash) | 
Self Check-in & out Machines | 
Smart check-in | 
Internet section | 
Free Wi-Fi | 
Contactless IC key card |
| 
Vending machines | 
Coin-operated laundry | 
Free amenity area | 
Courier service | 
Rental PC | 
Smoking space |

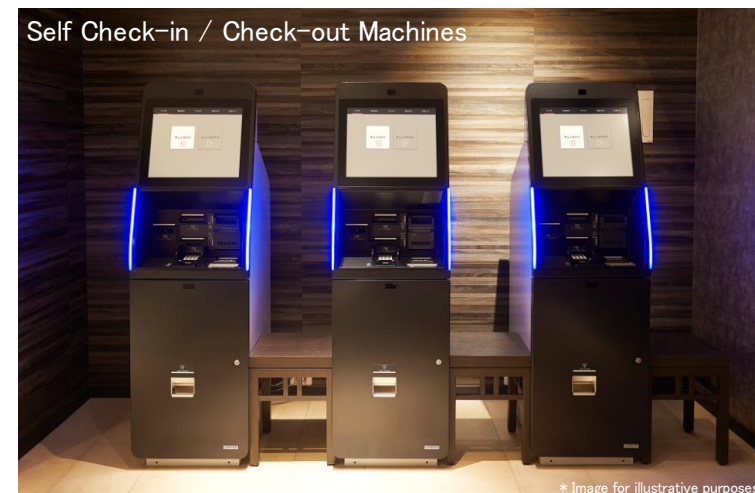


Cashless payments only (no cash)



* Image for illustrative purposes.

Self Check-in / Check-out Machines



* Image for illustrative purposes.

Free amenity area



* Image for illustrative purposes.



Six Sotetsu Fresa Inn Highlights!

1. Heartfelt smiles and hospitality

Offering service that makes you want to come back again.

2. Excellent location

Located within a five-minute walk from major city stations.

3. Comfortable livability

Free Wi-Fi, air purifier, high quality beds, two-piece waffle pajamas, and more...

4. Design and security

Room IC cards have been enhanced by designers to ensure complete security.

5. Full set of amenities

Bath additives, facial cleansers, teas, tea bags, etc., are available for your convenience.

6. Hygienic facilities

Our specialized staff take pride in their thorough cleaning.