



# Sotetsu Fresa Inn Hamamatsucho-Daimon

Conveniently situated in the heart of the city and close to Haneda Airport  
Elegantly furnished rooms for business and leisure travellers  
All rooms are fully equipped with reliable security facilities.  
This hotel accepts cashless payment. Please use a credit card or QR code payment system for payments of charges.

## ROOM EQUIPMENTS / AMENITY



LCD TV



Video on demand  
(charges apply)



Wi-Fi available



Refrigerator



Electric kettle



Extension telephone



With humidifier function Air purifier



Ionic hair dryer



Shampoo



Conditioner



Body wash



Body sponge



Bath towel



Face towel



Two-piece pajamas



Toothbrush



Razor



Slippers



Air freshener



Women's amenity kit



Women's amenity kit

\* Image for illustrative purposes.

\* Women's amenity kit is offered at the lobby.  
\* Mobile charger is lent at the front desk.

## NUMBERS OF GUEST ROOMS : 190

Room Type	Room size (㎡)	Bed size(mm)	Numbers of rooms	Floor
Single	11.3~13.2	1200	48	3~14
Double	11.2~11.9	1400	140	2~14
Twin	22.1	1200 × 2	1	2
Universal Twin	23.8	1200 × 2	1	2

● 2 guests available : 190 rooms

● Non-Smoking Room: 155 rooms (2~6·8·10~12·14 floor)

● Smoking Room: 45 rooms (7·9·13 floor)

## BREAKFAST

### 【Lounge (Lobby floor)】

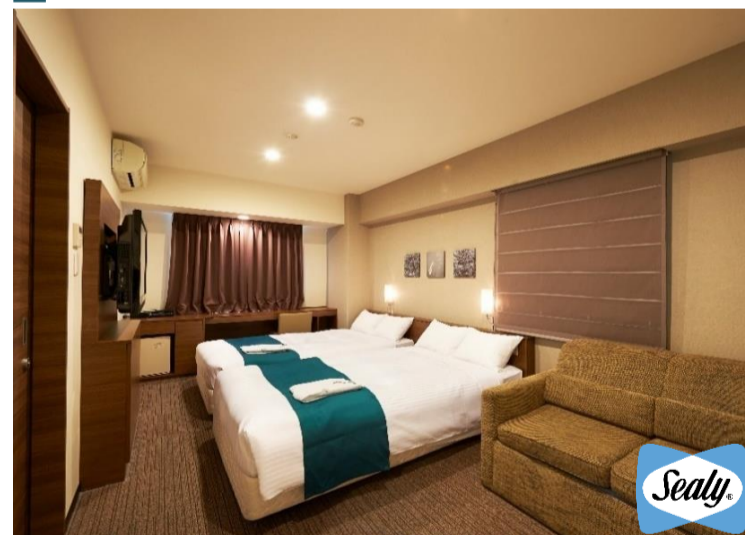
OPEN HOURS : 6:30~10:00 (9:30 L.O.)

NUMBERS OF SEATS : 36

MENU : Buffet-style breakfast mainly with Japanese cuisine  
In addition to regular daily menu such as egg dishes, meat dishes, salad, we mainly serve Japanese dishes such as daily Japanese hot pot, daily steamed dishes and side dishes.

PRICE : 1,130 yen (tax included)

### Twin



### Breakfast



Lounge (Lobby floor)

## ABOUT THE HOTEL

ADDRESS : 1-2-7 Shibadaimon, Minato-ku, Tokyo 105-0012

TEL : (+81)3-5472-2031 FAX : (+81)3-5472-2035

CHECK-IN/OUT : 15:00 / 11:00

AVAILABLE PAYMENT : VISA • MASTER • JCB • AMEX • DINERS • DISCOVER • UnionPay

METHODS LINE Pay • PayPay • 払い • au PAY • Rpay • ALIPAY • WeChatPay

\*This hotel accepts cashless payment.

E-MAIL : fresa\_daimon@sotetsu-group.jp

URL : <https://fresa-inn.jp/en/daimon/>

ACCESS : A 8 minute walk from North Exit of Hamamatsucho Station on the JR Yamanote Line and Keihin-Tohoku Lines

A 8 minute walk from Monorail Hamamatsucho Station on the Tokyo Monorail Line

A 4 minute walk from Exit A5 of Daimon Station on the Toei Asakusa and Oedo Lines

A 4 minute walk from Exit A3 of Onarimon Station on the Toei Mita Line

## LOCATION

- Tokyo Sta. → Hamamatsu Sta. (Approx 6 minutes by train)  
(JR Yamanote Line • Keihin-tohoku Line)
- Shinjuku Sta. → Daimon Sta. (Approx 16 minutes by train)  
(Toei Oedo Line)
- Shinagawa Sta. → Hamamatsucho Sta. (Approx 5 minutes by train)  
(JR Yamanote Line • Keihin-tohoku Line)
- Ueno Sta. → Hamamatsucho Sta. (Approx 14 minutes by train)  
(JR Yamanote Line • Keihin-tohoku Line)
- Asakusa Sta. → Daimon Sta. (Approx 15 minutes by train)  
(Toei Oedo Line)
- Tokyo International Exhibition Center (Tokyo Big Sight)  
Kokusai-tenjijoseimon Sta. → Shiodome Sta. → Daimon Sta. (Approx 29 minutes by train)  
(Yurikamome) (Toei Oedo Line)
- TOKYO DOME  
Onarimon Sta. → Suidobashi Sta. (Approx 10 minutes by train)  
(Toei Mita Line)
- Haneda Airport  
Haneda Airport Terminal1 Sta. → Hamamatsucho Sta. (Approx 26 minutes by train)  
(Tokyo Monorail)
- Haneda Airport International Terminal Sta. → Daimon Sta. (Approx 20 minutes by train)  
(Toei Asakusa Line • Keikyu Airport Line)
- Narita Airport  
Narita Airport (Terminal1) Sta. → Aoto Sta. → Daimon Sta. (Approx 84 minutes by train)  
(Keisei Narita Airport Line) (Toei Asakusa Line)
- Tokyo SKYTREE  
Oshiage (Tokyo SKYTREE) Sta. → Daimon Sta. (Approx 19 minutes by train)  
(Toei Asakusa Line)
- Tokyo Disney Resort  
Maihama Sta. → Shin-kiba Sta. → Tsukishima Sta. → Dimonn Sta. (Approx 34 minutes by train)  
(JR Keiyo Line) (Tokyo Metro Yurakucho Line) (Toei Oedo Line)

## FACILITIES



Cashless payments



Self Check-in & out Machines



Smart check-in



Internet section



Wi-Fi available



Contactless IC key card



Vending machines



Coin-operated laundry



Free amenity area



Courier service



Rental PC



SOTETSU  
**FRÉSA**  
INN  
FRÉsh-Sense-Amenity

## Six Sotetsu Fresa Inn Highlights!

### 1. Heartfelt smiles and hospitality

Offering service that makes you want to come back again

### 2. Excellent location

Located within a five-minute walk from major city stations

### 3. Comfortable livability

Free Wi-Fi, air purifier, high quality beds, two-piece waffle pajamas, and more...

### 4. Design and security

Room IC cards have been enhanced by designers to ensure complete security

### 5. Full set of amenities

Free amenities and ladies' amenities including bath additives and tea bags

### 6. Hygienic facilities

Our specialized staff take pride in their thorough cleaning