



SOTETSU GRAND FRÉSA TOKYO-BAY ARIAKE

Good location with a 3 minute walk from Kokusai-tenjijo Station on the Rinkai Line, and a 3 minute walk from Tokyo Big Sight Station on the Yurikamome Line. A 5 minute walk to Tokyo Big Sight, the largest convention center in Japan. In addition within walking distance of the Odaiba area. Limousine buses are available to both Haneda Airport and Narita Airport, and also you can get to Tokyo Disney Resort® in 30 to 45 minutes by "Good Neighbor Hotel Shuttle", making it a convenient hotel for leisure as well as business.

ROOM EQUIPMENTS / AMENITY



LCD TV



Video on demand (charges apply)



Wi-Fi



Cool box



Electric kettle



Extension telephone



Air purifier with humidifying function



Ionic hair dryer



Shampoo



Conditioner



Body wash



Bath towel



Face towel



Two-piece pajamas



Slippers



Air freshener

■ Skin care / Hair care amenities



* Image for illustrative purposes.

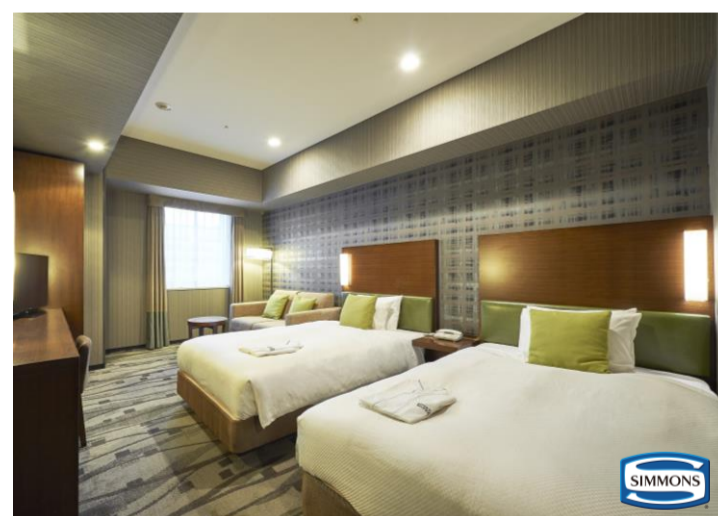
- * Other complimentary amenities are available for your choice in the lobby.
- * Mobile charger is lent at the front desk.
- * VOD is for regular floor only. On the premium floor, satellite broadcasting WOWOW Channel is available.

NUMBERS OF GUEST ROOMS : 912

Room Type	Room size (rf)	Bed size (mm)	Maximum number of people	Number of rooms	Floor	Premium floor Room Type	Room size (rf)	Bed size (mm)	Maximum number of people	Number of rooms	Floor
Standard Double	17.3~21.7	1400	2	539	3~16	Premium Double	20.5~31.0	1400	2	42	17~20
Deluxe Double	22.5~24.0	1600	2	31	3~16	Premium Bay-Side Double	20.5	1400	2	56	17~20
Economy Twin	17.3	970 × 2	2	50	3~7	Standard Suite	34.0	950 × 2	2	8	17~20
Standard Twin	23.3~26.0	1210 × 2	2	127	3~16	Deluxe Suite	41.0	950 × 2 (+ sofa bed, extra bed)	4	12	17~20
Economy Trundle Twin	24.5	970 × 2 (+ trundle bed)	3	5	8~12	Executive Suite	45.0	950 × 2	2	4	17~20
Superior Twin	32.3	1210 × 2 (+ sofa bed)	3	22	3~13						
Deluxe Twin (Fourth)	41.5	1210 × 2 (+ sofa bed, extra bed)	4	6	14~16						
Standard Universal Single	21.7	1100	1	5	3~7						
Standard Universal Twin	24.5	1100 × 2	2	5	3~7						

- Non-Smoking Room: 653 rooms (5~12,15,16,18~20 floor)
 - Smoking Room: 259 rooms (3,4,13,14,17 floor)
- *The number of extra beds is limited.

■ Twin



■ Restaurant "Sosai Patio"



* Image for illustrative purposes.

BREAKFAST

【Restaurant "Sosai Patio" (2nd floor)】

OPEN HOURS : 6:45~10:30AM (Last order 10:00)

NUMBERS OF SEATS : 177

MENU : Western-Japanese style breakfast buffet
Egg dish/ Bacon/ Sausage/ Potage/ Salad/ Dessert/ Fruit/ Drink/ Bread
Grilled fish/ Japanese side dish/ Natto/ Rice/ Miso soup/ Pickles
Noodle dish of the day/ Hot dish of the day/ Curry etc.

PRICE : JPY 2,090 (tax included)

* Child (elementary school) JPY 1,155 (tax included)

ABOUT THE HOTEL

ADDRESS : 3-6-6 Ariake, Koto-Ku ,Tokyo 135-0063

TEL : (+81)3-6899-2030 FAX : (+81)3-6899-2035

CHECK-IN/OUT : 15:00/11:00

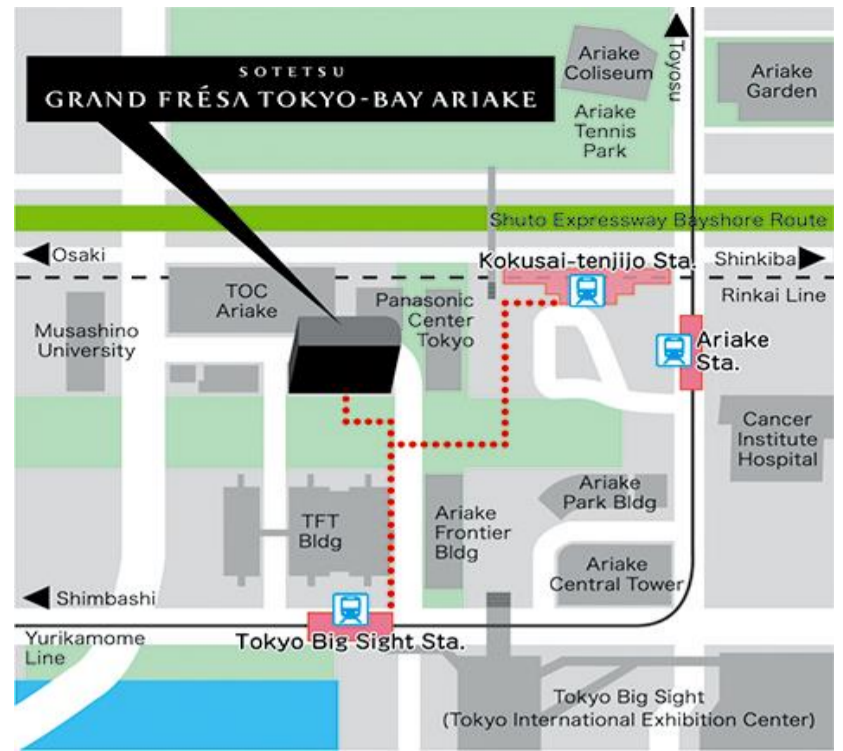
CREDIT : VISA・MASTER・JCB・AMEX・DINERS・UnionPay

E-MAIL : gf_ariake@sotetsu-group.jp

URL : <https://sotetsu-hotels.com/en/grand-fresa/ariake/>

ACCESS : A 3 minute walk from Kokusai-Tenjijo Station
on the Rinkai Line

A 3 minute walk from Tokyo Big Sight Station
on the Yurikamome Line



LOCATION

- Tokyo Disney Resort® (Maihama Sta.)
Maihama Sta. → Shin-kiba Sta. → Kokusai-tenjijo Sta. (Approx 30 minutes by train)
(JR Keiyo Line) (Rinkai Line)
- Tokyo Sta. → Shin-kiba Sta. → Kokusai-tenjijo Sta. (Approx 30 minutes by train)
(JR Keiyo Line) (Rinkai Line)
- Yurakucho Sta. → Shin-kiba Sta. → Kokusai-tenjijo Sta. (Approx 30 minutes by train)
(JR Keiyo Line) (Rinkai Line)
- Shinjuku Sta. → Osaki Sta. → Kokusai-tenjijo Sta. (Approx 30 minutes by train)
(JR Yamanote Line) (Rinkai Line)
- Shinagawa Sta. → Osaki Sta. → Kokusai-tenjijo Sta. (Approx 20 minutes by train)
(JR Yamanote Line) (Rinkai Line)
- Shimbashi Sta. → Tokyo Big Sight Sta. (Approx 25 minutes by train)
(Yurikamome)
- Haneda Airport → Sotetsu Grand Fresa Tokyo-Bay Ariake (Approx 40 minutes by bus)
(Airport Limousine Bus)
- Narita Airport → Sotetsu Grand Fresa Tokyo-Bay Ariake (Approx 80 minutes by bus)
(Airport Limousine Bus)

*Estimated travel time is based on Google map.

*Please note that it may take longer than estimated due to heavy traffic (during certain hours)



* Image for illustrative purposes.

MEETING ROOM/BANQUET ROOM

- 2nd Floor Meeting Room 「Hanaakari」
(Capacity Seats) School Style/224 guests、Stand-Up Meal Style/200 guests
- 2nd Floor Meeting Room 「Using 2/3 of Hanaakari」
(Capacity Seats) School Style/144 guests、Stand-Up Meal Style/120 guests
- 2nd Floor Meeting Room 「Using 1/3 of Hanaakari」
(Capacity Seats) School Style/63 guests、Stand-Up Meal Style/50 guests
- 1st Floor Meeting Room
(Capacity Seats) School Style/30 guests、Square Style/24 guests



* Image for illustrative purposes.

FACILITIES



Smart
check-in



Free
Wi-Fi



Contactless
IC key card



Vending machines



Coin-operated
laundry



Free
amenity area



Courier service



Smoking space



* Image for illustrative purposes.

SOTETSU
GRAND
FRÉSA

Six SOTETSU GRAND FRÉSA Highlights!

1. Heartfelt smiles and hospitality

Offering service that makes you want to come back again.

2. Excellent location

Located within a five-minute walk from major city stations.

3. Comfortable livability

Free Wi-Fi, air purifier, high quality beds, two-piece waffle pajamas, and more...

4. Full set of amenities

Bath additives, facial cleansers, tea bags, etc., are available for your convenience

5. Hygienic facilities

Professional staff will prepare clean rooms to welcome the guests.

6. Membership program

SOTETSU HOTELS CLUB offers a variety of benefits