



SOTETSU
FRESA
 INN
 FREsh · Sense · Amenity

Sotetsu Fresa Inn Tokyo-Kinshicho

Sotetsu Fresa Inn Tokyo-Kinshicho is offering you direct access to major landmarks and areas such as Tokyo Sky Tree, Shinjuku, Akihabara, and Shibuya from the nearest stations.

Also you can visit those areas Ueno, Asakusa, Ginza, and Harajuku with only 1 time train transfer.

Our hotel can be your convenient base while your trip to Tokyo.

This hotel accepts cashless payment.

Please use a credit card or QR code payment system for payments of charges.

ROOM EQUIPMENTS / AMENITY



LCD TV



Pay broadcast



Wi-Fi available
in all rooms



Refrigerator



Electric kettle



Extension
telephone



Air purifier with
humidifying
function



Ionic hair
dryer



Shampoo



Conditioner



Body wash



Body sponge



Bath towel



Face towel



Two-piece
pajamas



Toothbrush



Razor



Slippers



Air freshener



Women's
amenity kit

* Women's amenity kit is offered at the lobby.

* Mobile charger is lent at the front desk.

Women's amenity kit



* Image for illustrative purposes.

NUMBERS OF GUEST ROOMS : 281

Room Type	Room size (m ²)	Bed size(mm)	Numbers of rooms	Floor
Compact Single	11.2~11.7	1000	39	2~14
Single	11.0~12.5	1200	32	2~14
Superior Single	14.4	1200	12	2~14
Casual Double	11.8~12.1	1400	57	2~14
Double	12.1~12.8	1400	55	2~14
Ladies' Double	12.1	1400	5	8・11
Comfort Double	11.5	1600	12	2~14
Corner Double	14.3	1400	11	2~12
Twin	15.0~15.7	1000 × 2	37	2~14
Superior Twin	17.3~20.6	1200 × 2	12	3~14
Comfort Twin	26.0	1100 × 2 (extra bed available)	2	13~14
Relax Twin	24.5	1100 × 2 (sofa bed available)	2	13~14
Triple	24.5	1200 × 3	4	13~14
Universal Double	20.6	1600	1	2

● 2 guests available: 242 rooms

● Non-Smoking Room: 236 rooms (2~8, 11~14 floor)

● Connect rooms (2 twin rooms): 13rooms

● Smoking Room: 45 rooms (9, 10 floor)

BREAKFAST

【SHIKI DINING (1st floor)】

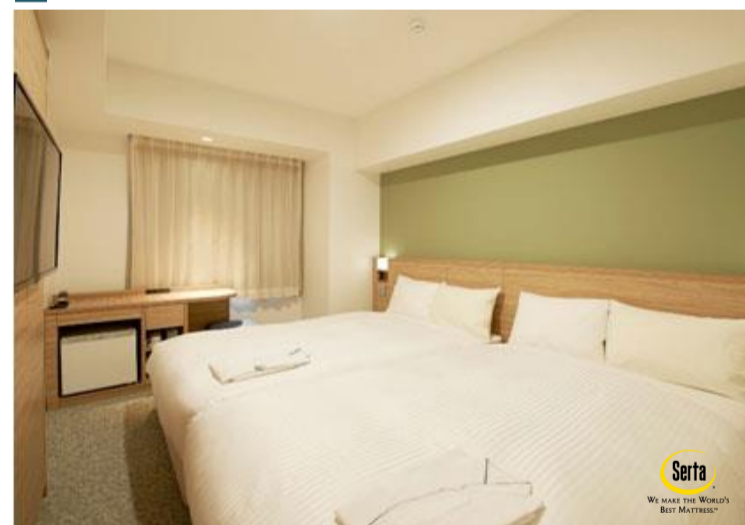
OPEN HOURS : 6:30~10:00(L.O.9:30)

NUMBERS OF SEATS : 67

MENU : Japanese and Western-style buffet

PRICE : 1,100 yen (tax included)

Twin



Breakfast



* Image for illustrative purposes.

ABOUT THE HOTEL

ADDRESS : 2-18-7 Kotobashi, Sumida-ku, Tokyo 130-0022

TEL : (+81)3-5625-4203 FAX : (+81)3-5625-3381

CHECK-IN/OUT : 15:00/11:00

AVAILABLE PAYMENT : VISA・MASTER・JCB・AMEX・DINERS・DISCOVER・UnionPay
METHODS LINE Pay・PayPay・d払い・au PAY・Rpay・ALIPAY・WeChatPay

*This hotel accepts cashless payment.

E-mail : fresa_kinshicho@sotetsu-group.jp

URL : <https://fresa-inn.jp/en/kinshicho/>

ACCESS : A 3 minute walk from the South Exit in Kinshicho Station on the JR Sobu Line
A 3 minute walk from Exit 1 in Kinshicho Station on the Tokyo Metro Hanzomon Line

LOCATION

■ Haneda Airport

Haneda Airport Terminal1 → Kinshicho Railway Sta. (Approx 35 minutes by bus)
(TOBU BUS Skytree Shuttle・KEIKYU BUS)

Haneda Airport Domestic terminal → Asakusabashi Sta. →
(Keioku Main Line Asakusa Line direct) (JR Sobu Line)

→ Kinshicho Sta.(Approx 45 minutes by train)

■ Narita Airport

Narita Airport Terminal2 → Tobu Hotel levant Tokyo →
(Tokyo Airport Bus)

→ Kinshicho Sta.(Approx 110 minutes by bus and walk)
(Walking)

Narita Airport Terminal2 → Oshiage(SKYTREE) Sta. → Kinshicho Sta.(Approx 60 minutes by train)
(Keisei Narita Airport Line) (Tokyo Metro Hanzomon Line)

■ Tokyo Sta. → Kinshicho Sta. (Approx 8 minutes by train)
(JR Sobu Line)

■ Shinjuku Sta. → Kinshicho Sta.(Approx 24 minutes by train)
(JR Chuo Sobu Line)

■ Shibuya Sta. → Kinshicho Sta.(Approx 28 minutes by train)
(Tokyo Metro Hanzomon Line)

■ Akihabara Sta. → Kinshicho Sta.(Approx 7 minutes by train)
(JR Chuo Sobu Line)

■ Tokyo SKYTREE

Kinshicho Sta. → Oshiage(SKYTREE) Sta.(Approx 2 minutes by train)
(Tokyo Metro Hanzomon Line)

■ RYOGOKU KOKUGIKAN

Kinshicho Sta. → Ryogoku Sta.(Approx 3 minutes by train)
(JR Chuo Sobu Line)

■ Senso-ji

Kinshicho Sta. → Nitenmon (Approx 16 minutes by bus)
(Toei Bus)

■ Tokyo Disney Resort

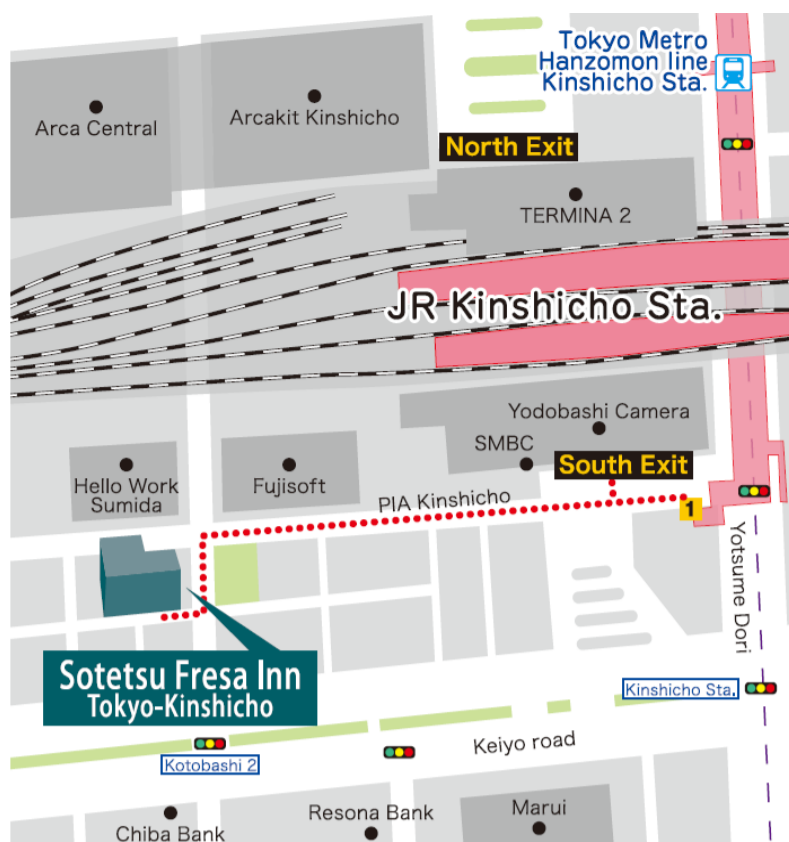
Kinshicho Sta. → Tokyo Disneyland・DisneySea (Approx 40 minutes by bus)
(TOBU BUS Skytree Shuttle)

■ TOKYO DOME

Kinshicho Sta. → Suidobashi Sta.(Approx 11 minutes by train)
(JR Chuo Sobu Line)

■ Nippon Budokan

Kinshicho Sta. → Kudanshita Sta.(Approx 16 minutes by train)
(Tokyo Metro Hanzomon Line)



Cashless payments



Self Check-in / Check-out Machines



Free amenity area



FACILITIES



Cashless payments



Self Check-in & out Machines



Smart check-in



Internet section



Wi-Fi available



Contactless IC key card



Vending machines



Coin-operated laundry



Free amenity area



Courier service



Rental PC



Smoking space

SOTETSU
FRESA
INN
FRESH・Sense・Amenity

Six Sotetsu Fresa Inn Highlights!

1. Heartfelt smiles and hospitality

Offering service that makes you want to come back again

2. Excellent location

Located within a five-minute walk from major city stations

3. Comfortable livability

Free Wi-Fi, air purifier, high quality beds, two-piece waffle pajamas, and more...

4. Design and security

Room IC cards have been enhanced by designers to ensure complete security

5. Full set of amenities

Free amenities and ladies' amenities including bath additives and tea bags

6. Hygienic facilities

Our specialized staff take pride in their thorough cleaning