



Sotetsu Fresa Inn Ochanomizu-Jimbocho

A 3 minute walk from Jimbocho Station.

Located within walking distance of Ochanomizu and Suidobashi,
this hotel is perfect for business or sightseeing.

We accept cashless payments only – credit card or QR code payments.

Please use a credit card or QR code payment system for payments of room charges.

We do not accept cash payments.

ROOM EQUIPMENTS / AMENITY



LCD TV



Video on demand
(charges apply)



Wi-Fi



Cool box



Electric kettle



Extension telephone



Air purifier with humidifying function



Ionic hair dryer



Shampoo



Conditioner



Body wash



Bath towel



Face towel



Two-piece pajamas



Slippers



Air freshener



Extension cord

Skin care / Hair care amenities



* Image for illustrative purposes.

* Other complimentary amenities are available for your choice in the lobby.

* Mobile charger is lent at the front desk.

NUMBERS OF GUEST ROOMS : 130

Room Type	Room size(m ²)	Bed size(mm)	Maximum number of people	Number of rooms	Floor
Single	9.0~9.5	1,200	1	35	2~8
Double	9.5~10.3	1,400	2	34	2~9
Superior Double	11.5	1,400	2	30	2~9
Comfort Double	11.3	1,400	2	8	2~9
Deluxe Double	11.4~11.9	1,600	2	6	3~8
Relax Double	13.5	1,400 (sofa bed available)	3	2	9
Twin (Connecting)	13.6	1,200 × 2	2	6	3~8
Boutique Twin	18.3	1,200 × 2 (sofa bed available)	3	2	9
Universal Twin	20.4	1,200 × 2	2	1	2
Connecting Deluxe Double	11.4	1,600	2	6	3~8

● Non-Smoking Room: 96 rooms (2,3,5,6,7,9 floor)

● Smoking Room: 34 rooms (4,8 floor)

BREAKFAST

【LITTLE MERMAID (1st floor)】

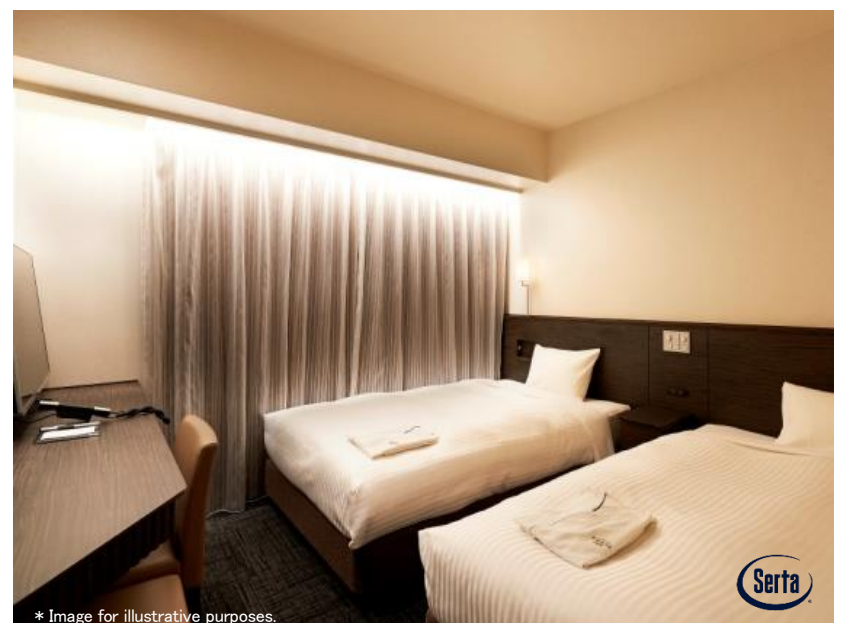
OPEN HOURS : 6:30~10:00AM (Last order 9:30)

NUMBERS OF SEATS : 28

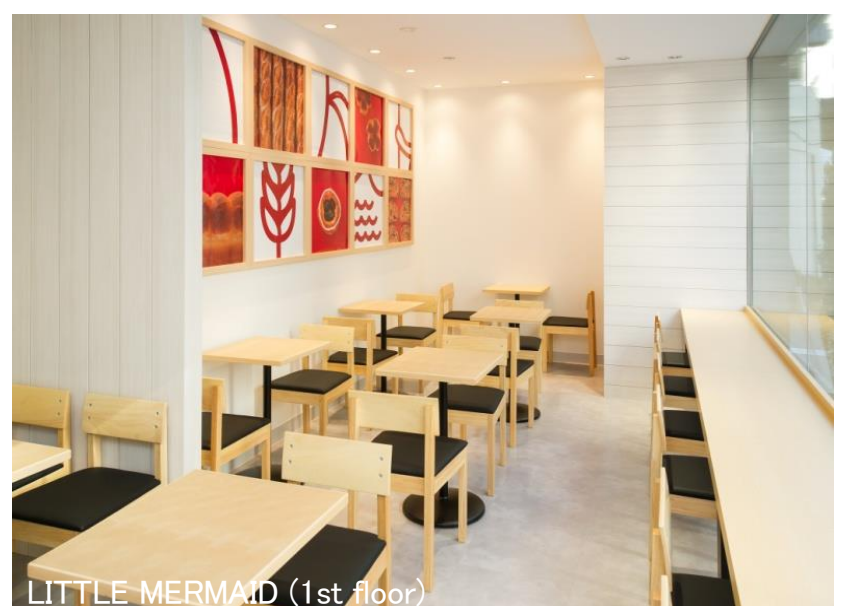
MENU : Two types of bread which you like + all you can eat toast + salad + coffee or tea
*Some breads may be excluded.

PRICE : JPY 800 (tax included)

Twin



* Image for illustrative purposes.



LITTLE MERMAID (1st floor)

ABOUT THE HOTEL

ADDRESS : 1-19-7 Kanda-jimbocho, Chiyoda-ku, Tokyo 101-0051
TEL : (+81)3-3518-8203 FAX : (+81)3-3518-8208
CHECK-IN/OUT : 15:00/11:00
AVAILABLE PAYMENT : VISA・MASTER・JCB・AMEX・DINERS・DISCOVER・UnionPay
METHODS : PayPay・Rakuten Pay・d barai・au PAY・LINE Pay・Alipay+・WeChat Pay
* We accept cashless payment only. (no cash)
E-mail : fresa_jimbocho@sotetsu-group.jp
URL : <https://sotetsu-hotels.com/en/fresa-inn/jimbocho/>
ACCESS : A 4 minute walk from Exit A7 in Jimbocho Station on the Tokyo Metro Hanzomon Line, Toei Shinjuku and Mita Lines
A 8 minute walk from the Ochanomizubashi Exit in Ochanomizu Station on the JR Sobu and Chuo Lines
A 9 minute walk from Exit 1 (Exit JR) in Ochanomizu Station on the Tokyo Metro Marunouchi line
A 6 minute walk from Exit B3 in Shin-ochanomizu Station on the Tokyo Metro Chiyoda line
A 6 minute walk from Exit B7 in Ogawamachi Station on the Toei Shinjuku line
A 6 minute walk from Exit B7 in Awajicho Station on the Tokyo Metro Marunouchi line

LOCATION

- Tokyo Sta. → Ochanomizu Sta. (Approx 4 minutes by train)
(JR Chuo Line)
- Tokyo Sta. → Otemachi Sta. → Jimbocho Sta. (Approx 6 minutes by train)
(Tokyo Metro Marunouchi Line) (Tokyo Metro Hanzomon Line)
- Kanda Sta. → Ochanomizu Sta. (Approx 2 minutes by train)
(JR Chuo Line)
- Ginza Sta. → Ochanomizu Sta. (Approx 8 minutes by train)
(Tokyo Metro Marunouchi Line)
- Shinagawa Sta. → Tokyo Sta. → Ochanomizu Sta. (Approx 17 minutes by train)
(JR Keihin-tohoku Line) (JR Chuo Line)
- Shinjuku Sta. → Ochanomizu Sta. (Approx 9 minutes by train)
(JR Chuo Line)
- Shinjuku Sta. → Jimbocho Sta. (Approx 11 minutes by train)
(Toei Subway Shinjuku Line)
- Ueno Sta. → Mitsukoshimae Sta. → Jimbocho sta. (Approx 17 minutes by train)
(Tokyo Metro Ginza Line) (Tokyo Metro Hanzomon Line)
- Akihabara Sta. → Ochanomizu Sta. (Approx 2 minutes by train)
(JR Chuo Line)
- Asakusa Sta. → Mitsukoshimae Sta. → Jimbocho Sta. (Approx 22 minutes by train)
(Tokyo Metro Ginza Line) (Tokyo Metro Hanzomon Line)
- Haneda Airport
Haneda Airport Sta. → Mita Sta. → Jimbocho Sta. (Approx 38 minutes by train)
(Keikyu Airport Line) (Toei Subway Mita Line)
- Narita Airport (Approx 75 minutes by train)
Narita Airport Line → Higashi-nihombashi Sta. → Bakuro yokoyama Sta. → Jimbocho Sta.
(Keisei Narita Sky Access Line) (Walking) (Toei Subway Shinjuku Line)
- TOKYO DOME
Suidobashi → Ochanomizu Sta. (Approx 1 minutes by train)
(JR Sobu Line)
- Nippon Budokan
Kudanshita Sta. → Jimbocho Sta. (Approx 1 minutes by train)
(Tokyo Metro Hanzomon Line・Toei Shinjuku Line)
- Tokyo Disney Resort
Maihama Sta. → Tokyo Sta. → Ochanomizu Sta. (Approx 30 minutes by train)
(JR Keiyo Line) (JR Chuo Line)

FACILITIES



Cashless payments only (no cash)



Check-in & out Machines



Smart check-in



Internet section



Wi-Fi



Vending machines



Coin-operated laundry



Courier service (cash on delivery only)



Free amenity area



Contactless IC key card



Cashless payments only (no cash)



* Image for illustrative purposes.

Self Check-in / Check-out Machines



* Image for illustrative purposes.

Free amenity area



* Image for illustrative purposes.

Six SOTETSU FRESA INN Highlights

1. Heartfelt smiles and hospitality

Offering service that makes you want to come back again

2. Excellent location

Located within a 5 minute walk from major city stations

3. Comfortable livability

Free Wi-Fi, humidifying air purifier, and high quality beds are available

4. Full set of amenities

Bath additives, facial cleansers, tea bags, etc., are available for your convenience

5. Hygienic facilities

Professional staff will prepare clean rooms to welcome the guests

6. Membership program

SOTETSU HOTELS CLUB offers a variety of benefits

SOTETSU
FRESA
INN
FRESH・Sense・Amenity